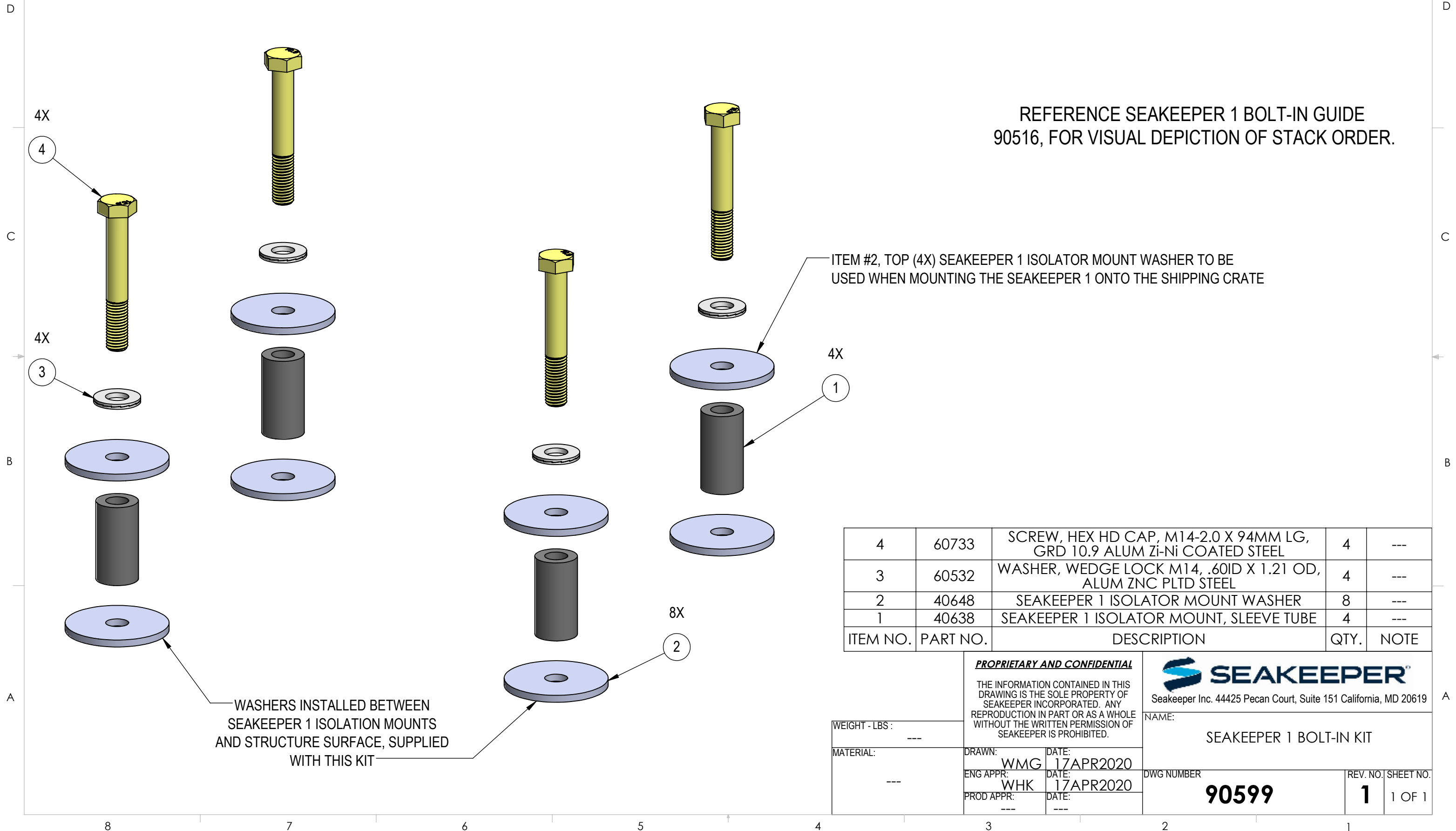


NOTE: 1) THESE COMPONENTS ARE TO BE USED DURING A DIRECT BOLT-IN INSTALLATION OF SEAKEEPER 1 TO ANY METAL OR FIBERGLASS SURFACE STRUCTURE IN ACCORDANCE TO THE SEAKEEPER 1 GENERIC INSTALLATION GUIDE. THE BOLTS SUPPLIED ARE CLASS 10.9 ALUMINUM ZINC-NICKEL COATED ALLOY STEEL, M14-2.0 X 94MM LG. ANY OTHER LENGTH NEEDED MUST BE SUPPLIED BY INSTALLER. SEAKEEPER RECOMMENDS THE USE OF ANTI-SEIZE ON ALL BOLTS.

REV NO.	ECN NO.	ZONE	DESCRIPTION	DATE	APPRVD.
1			RELEASED FOR PRODUCTION	4/17/2020	WMG



REFERENCE SEAKEEPER 1 BOLT-IN GUIDE 90516, FOR VISUAL DEPICTION OF STACK ORDER.

4	60733	SCREW, HEX HD CAP, M14-2.0 X 94MM LG, GRD 10.9 ALUM ZI-NI COATED STEEL	4	---
3	60532	WASHER, WEDGE LOCK M14, .60ID X 1.21 OD, ALUM ZNC PLTD STEEL	4	---
2	40648	SEAKEEPER 1 ISOLATOR MOUNT WASHER	8	---
1	40638	SEAKEEPER 1 ISOLATOR MOUNT, SLEEVE TUBE	4	---
ITEM NO.	PART NO.	DESCRIPTION	QTY.	NOTE

PROPRIETARY AND CONFIDENTIAL

THE INFORMATION CONTAINED IN THIS DRAWING IS THE SOLE PROPERTY OF SEAKEEPER INCORPORATED. ANY REPRODUCTION IN PART OR AS A WHOLE WITHOUT THE WRITTEN PERMISSION OF SEAKEEPER IS PROHIBITED.



Seakeeper Inc. 44425 Pecan Court, Suite 151 California, MD 20619

NAME: SEAKEEPER 1 BOLT-IN KIT

WEIGHT - LBS: ---

MATERIAL: ---

DRAWN: WMG DATE: 17APR2020

ENG APPR: WHK DATE: 17APR2020

PROD APPR: --- DATE: ---

DWG NUMBER 90599 REV. NO. SHEET NO. 1 1 OF 1

90599

1 1 OF 1