

Thank You

Thank you for choosing Humminbird®, the #1 name in Fishfinders. Humminbird® has built its reputation by designing and manufacturing top-quality, thoroughly reliable marine equipment.

Your Humminbird® accessory is designed for trouble free use in even the harshest marine environment. In the unlikely event that your Humminbird® accessory does require repairs, we offer an exclusive Service Policy - free of charge during the first year after purchase, and available at a reasonable rate after the one-year period. For complete details, see the separate warranty card included with your accessory. We encourage you to read this guide carefully in order to get full benefit from all the features and applications of your Humminbird® product.

Contact our Customer Resource Center at **1-800-633-1468** or visit our Web site at **humminbird.com**.

Overview

Use the Autopilot Gimbal Mount to install the control head in a location where it can be tilted for easy viewing. The installation kit includes the following supplies*:

- Gimbal bracket (1)
- Gimbal knobs (2)
- #10 1¼ inch screws (3)
- #10 Flat washers (3)
- #8 7/8 inch screws (2)
- 9/32 x 15/16 x 1/16 Neoprene washers (2)
- Plastic Hole cover (1)
- Plastic cable grommet (1)

*Product supplies and features are subject to change without notice.

Supplies: In addition to the hardware supplied with your installation kit, you will need a powered drill and various drill bits, various hand tools, including a Phillips head screwdriver, a socket wrench, a flat head screwdriver, a marker or pencil, safety glasses and dust mask, and marine-grade silicone sealant.

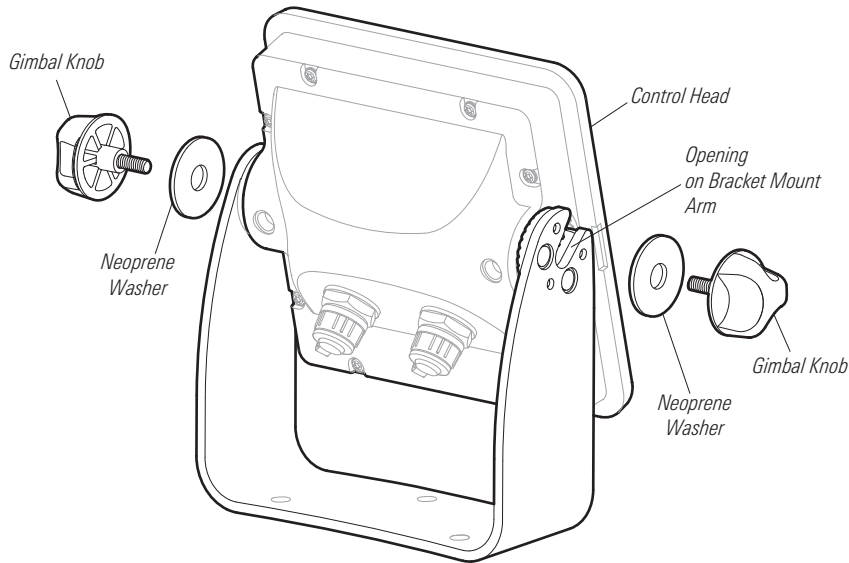
Autopilot Gimbal Mount

531788-2_A

1. Planning the Mounting Location

To gimbal mount the Autopilot, pre-assemble the unit to plan the best mounting location.

1. Place one of the 2 neoprene washers on one of the gimbal knobs, and then thread the knob and washer into the Autopilot housing. Tighten the knob just enough so that there is adequate space to slide the control head into the openings on the arms of the bracket mount.



2. Repeat step 1 for the other side.
3. Slide the control head into the arms of the bracket mount.
4. Hand-tighten the gimbal knobs to secure the control head to the mount.
5. Place the assembled Autopilot in various locations to determine the mounting location. Consider the following when choosing a mounting location:
 - Make sure there is enough space behind the chosen location to drill a 1" (25.4 mm) hole for the cables to pass through.
 - The chosen mounting area should allow for sufficient space so the Autopilot can pivot through the full tilt range.
 - The mounting location should allow for visibility during operation, as well as easy installation and removal.
 - You must have underside access to the mounting location to pass the cables through to the surface. Also, make sure that the mounting surface is adequately supported to protect the Autopilot from excessive wave shock and vibration.
6. Test route the power and accessory cables to your Autopilot mounting location.
 - If the cables are too short for your application, extension cables are available. Contact our Customer Resource Center for information.
 - If either cable is too long, you can neatly gather the excess cable and mount it to a secure location.

2. Installing the Gimbal Bracket

1. After the mounting location is determined, loosen the gimbal knobs and remove the control head from the gimbal bracket.
2. Place the gimbal bracket in the chosen position on the mounting surface and mark the three mounting screw locations using a pencil or center punch.

NOTE: Make sure the side with the single screw hole is facing forward.

3. Set the gimbal bracket aside and drill the three mounting screw holes using a drill bit of appropriate size.

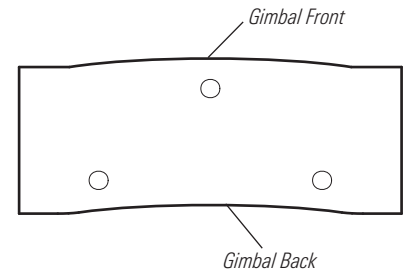
NOTE: When drilling holes in fiberglass, it is best to start with a smaller bit and use progressively larger drill bits to reduce the chance of chipping or flaking the outer coating.

4. Place the gimbal bracket on the mounting surface aligned with the drilled holes and fill the mounting holes with marine grade silicone sealant.
5. Place one of the #10 washers on one of the #10 screws and then thread the screw and washer into the gimbal bracket until secure.
6. Repeat step 5 for the remaining 2 screws.
7. Mark and drill a 1" (25 mm) hole behind the gimbal bracket (centered, between 1" to 2" from the back) that will allow you to run the cables close to the bracket.
8. Apply marine-grade silicone sealant around the hole, and on the outside of the grommet.
9. Align the grommet on top of the hole and tap lightly into place.
10. Place the hole cover over the hole and use it to mark the position of the two mounting screws. Drill the two screw holes.
11. Pass the cables through the 1" (25 mm) hole, and connect them to the appropriate ports on the control head.

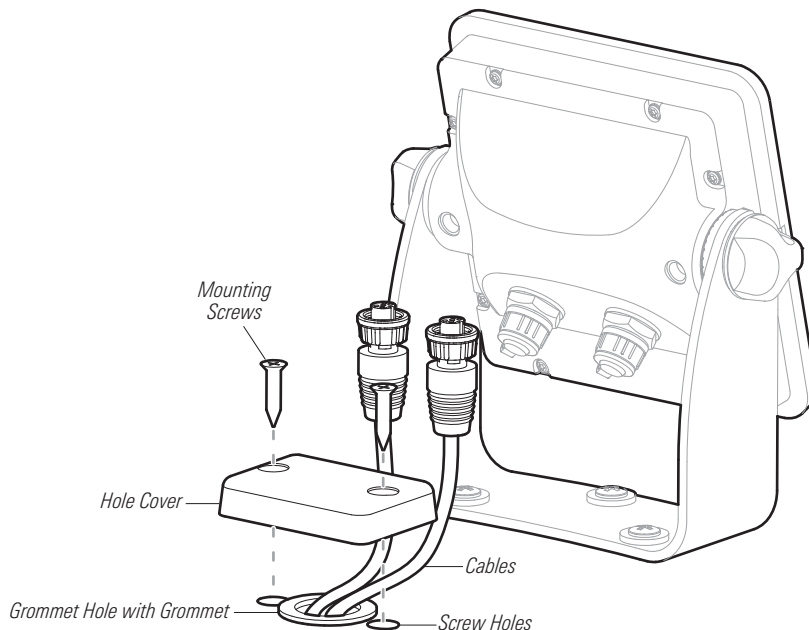
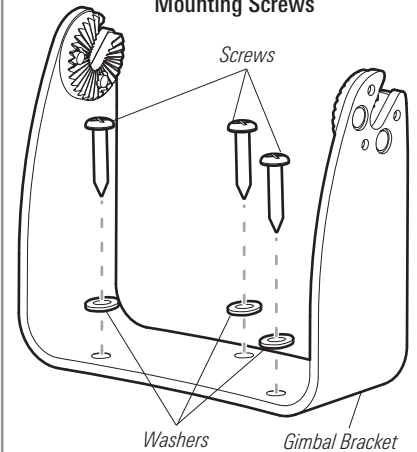
NOTE: Be sure there is enough cable slack to allow for the control head to pivot through its full tilt range. Extra cable slack will also help with connecting and disconnecting cables.

12. Fill the screw holes with marine-grade silicone sealant, replace the hole cover and insert the two #8 screws. **Hand-tighten only.**

Gimbal Bracket Bottom



Gimbal Bracket & Mounting Screws



Autopilot Gimbal Mount

531788-2_A

Contact Humminbird®

Contact the Humminbird® Customer Resource Center
in any of the following ways:

By Telephone

(Monday - Friday 8:00 a.m. to 4:30 p.m. Central Standard Time):

1-800-633-1468

By e-mail

(typically we respond to your e-mail within three business days):

service@humminbird.com

For direct shipping, our address is:

**Humminbird
Service Department
678 Humminbird Lane
Eufaula, AL 36027 USA**

WARNING! This device should not be used as a navigational aid to prevent collision, grounding, boat damage, or personal injury. When the boat is moving, water depth may change too quickly to allow time for you to react. Always operate the boat at very slow speeds if you suspect shallow water or submerged objects.

WARNING! Disassembly and repair of this electronic unit should only be performed by authorized service personnel. Any modification of the serial number or attempt to repair the original equipment or accessories by unauthorized individuals will void the warranty.

WARNING! This product contains chemicals known to the State of California to cause cancer and/or reproductive harm.

ENVIRONMENTAL COMPLIANCE STATEMENT: It is the intention of Johnson Outdoors Marine Electronics, Inc. to be a responsible corporate citizen, operating in compliance with known and applicable environmental regulations, and a good neighbor in the communities where we make or sell our products.

WEEE Directive: EU Directive 2002/96/EC "Waste of Electrical and Electronic Equipment Directive (WEEE)" impacts most distributors, sellers, and manufacturers of consumer electronics in the European Union. The WEEE Directive requires the producer of consumer electronics to take responsibility for the management of waste from their products to achieve environmentally responsible disposal during the product life cycle.

WEEE compliance may not be required in your location for electrical & electronic equipment (EEE), nor may it be required for EEE designed and intended as fixed or temporary installation in transportation vehicles such as automobiles, aircraft, and boats. In some European Union member states, these vehicles are considered outside of the scope of the Directive, and EEE for those applications can be considered excluded from the WEEE Directive requirement.



This symbol (WEEE wheeie bin) on product indicates the product must not be disposed of with other household refuse. It must be disposed of and collected for recycling and recovery of waste EEE.

Johnson Outdoors Marine Electronics, Inc. will mark all EEE products in accordance with the WEEE Directive. It is our goal to comply in the collection, treatment, recovery, and environmentally sound disposal of those products; however, these requirements do vary within European Union member states. For more information about where you should dispose of your waste equipment for recycling and recovery and/or your European Union member state requirements, please contact your dealer or distributor from which your product was purchased.