

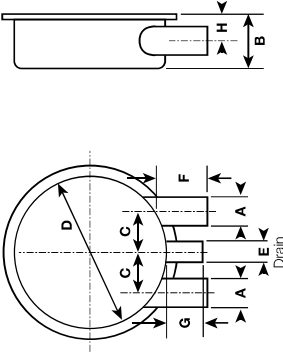
Exhaust Systems and Accessories

GRP Water Separators

GRP Low Profile Water Separator



Part No.	GRP Low Profile Water Separator											
	Reference	A	B	C	D	E	F	G	H	Weight		
		inch	mm	mm	mm	mm	inch	mm	mm	mm	kg	
H014054	HFS020	2	51	125	75	305	1 1/2	38	96	76	65	4.4
H001511	HFS025	2 1/2	63	140	100	346	1 1/2	38	144	100	70	4.8
H001514	HFS030	3	76	140	110	398	2	51	144	100	70	6.5
H001515	HFS035	3 1/2	89	140	110	398	2	51	144	107	70	6.5
H001516	HFS040	4	102	170	110	398	2	51	144	107	85	7.0
H007116	HFS050	5	127	175	125	494	2 1/2	63	140	107	88	12.5
H010304	HFS060	6	152	215	151	594	2 7/2	63	175	107	105	17.1



Drawings and dimensions are for guidance. Alternative sizes and configurations available on request.

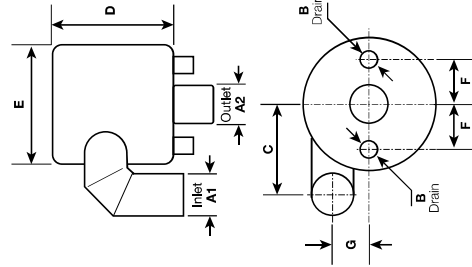
This separator has universal inlet and outlet tubes. The tubes marked 'A' can be used as either inlet or outlet

GRP General Water Separator



Part No.	GRP General Water Separator										
	Reference	A1	A2	B	C	D	E	F	G	Weight	
		mm	mm	mm	mm	mm	mm	mm	mm	mm	kg
H001687	HWS030	76	76	38	240	356	346	120	110	110	7.6
H001688	HWS035	89	89	38	264	356	346	120	110	110	7.8
H001689	HWS040	102	102	38	282	356	346	120	100	100	9.5
H001690	HWS050	127	127	51	310	406	398	150	110	110	11.1
H001691	HWS060	152	152	51	335	406	398	158	100	100	12.1

Drawings and dimensions are for guidance. Alternative sizes and configurations available on request.



GRP Tubes & Connectors

GRP Tube

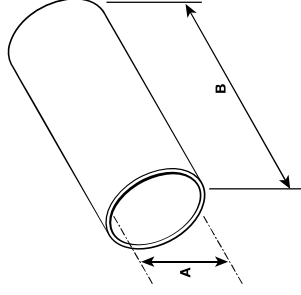


Diameters from 2" to 24" are supplied with peel-ply wrapping - a special layer which the customer peels off to leave a coarse surface requiring minimal preparation.

Lloyd's Approved resins with special temperature ratings are used in the manufacture of this tube (applies to tube over 2" / 51mm only).

Part numbers H000526 – H000530, do not have Lloyd's Approval.

Note: Lloyd's Type Approval is applicable for Halvard GRP products in exhaust system applications.



Part No.	Reference	GRP Tube					Standard Length	B
		A Nominal O.D.		Nominal Wall Thickness	Weight	kg per m		
		inch	mm					
H000526	HT001	3/4	19	3.5	0.25	1.2	1.2	
H000527	HT005	1	25	2.6	0.33	1.2	1.2	
H000528	HT010	1 1/2	38	4	0.5	1.2	1.2	
H000529	HT015	1 5/8	41	2.3	0.5	1.2	1.2	
H000530	HT020	1 3/4	45	2.5	0.6	1.2	1.2	
H009939	HT030	2	51	2.5	0.7	3	3	
H009940	HT040	2 3/8	60	3	0.9	3	3	
H009953	HT045	2 1/2	63	3.5	1	3	3	
H009954	HT055	3	76	4	1.3	3	3	
H009965	HT060	3 1/2	89	4	1.5	3	3	
H009966	HT065	4	102	4	1.9	3	3	
H010014	HT070	4 1/2	114	4	2.2	3	3	
H010017	HT075	5	127	4	2.5	3	3	
H010018	HT080	6	152	4	2.9	3	3	
H010028	HT082	7	178	4.5	3.7	3	3	
H010030	HT085	8	203	4.5	4.5	3	3	
H010034	HT090	10	254	4.5	5.5	3	3	
H010036	HT095	12	305	4.5	6.8	3	3	
H010040	HT100	13 5/8	346	5	7.7	3	3	
H010041	HT105	15 3/8	398	4.5	8.9	3	3	
H010371	HT115	19 13/32	493	5	10.9	3	3	
H010042	HT120	23 11/32	593	5	14.7	3	3	

Drawings and dimensions are for guidance. Alternative sizes and up to 10000mm O.D. configurations available on request.

