

M2 OLED Monitor for displaying multiple AC and DC systems

- Measures essential electrical system parameters
- Adjustable audible alarms
- Auto-dimming display
- Waterproof seal on the unit face (surface mount only)
- MOSFET External Circuit Relay (ECR) controls external circuits (like generators)
- High contrast and resolution
- Visible from wide viewing angle
- Visible with polarized glasses



Cover



1830

DC SoC Monitor

- Monitors State-of-Charge of 1 battery bank
- Measures voltage on 3 battery banks
- Supports programmable shunt ratios
- External relay activation



Surface mount



Flat panel mount



1525 (meter not included)

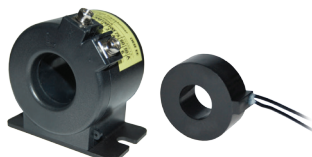
Related Products



ML Series Remote Battery Switches



DC Shunts



AC Current Transformers



Floyd Bell Turbo Series Alarm

M2 OLED DIGITAL METERS



Scan for additional product information

DC Meters

1830
DC SoC Monitor
Monitors state-of-charge on one battery bank and voltage on three battery banks

Specifications
Display Size 55mm x 28mm
Power Supply 7V-70V DC
Power Consumption 0.3W-1.0W*

Voltage
Voltages 12V, 24V, 48V
Range 8V-70V DC
Resolution 0.01V DC

Current
Shunt Included 1 x PN 8255 (500A /50mV)
Range -500A to 500A
Resolution (100 to 500) 1A
Resolution (0.0 to 99.9) 0.1A
Alarm / Relay Activation High and Low Voltage, High Current, and Low Battery



1832
DC Ammeter
Monitors current on two circuits

Specifications
Display Size 55mm x 28mm
Power Supply 7V-70V DC
Power Consumption 0.3W-1.0W*

Current
Shunt Included 1 x PN 8255 (500A /50mV)
Range -500A to 500A
Resolution (100 to 500) 1A
Resolution (0.0 to 99.9) 0.1A
Alarm / Relay Activation High and Low Voltage, High Current, and Low Battery



1833
DC Voltmeter
Monitors voltage on up to four battery banks

Specifications
Display Size 55mm x 28mm
Power Supply 7V-70V DC
Power Consumption 0.3W-1.0W*

Voltage
Range 8V-70V DC
Resolution 0.01V DC
Alarm / Relay Activation High and Low Voltage



1834
DC Multimeter
Monitors voltage on three battery banks and current on one circuit

Specifications
Display Size 55mm x 28mm
Power Supply 7V-70V DC
Power Consumption 0.3W-1.0W*

Voltage
Range 8V-70V DC
Resolution 0.01V DC

Current
Shunt Included 1 x PN 8255 (500A /50mV)
Range -500A to 500A
Resolution (100 to 500) 1A
Resolution (0.0 to 99.9) 0.1A
Alarm / Relay Activation High and Low Voltage, High Current, and Low Battery



PN	Description	Measurement	Includes Shunt
1830	DC State-of-Charge	State-of-Charge	500A PN 8255
1832	DC Ammeter	Amperage	500A PN 8255
1833	DC Voltmeter	Voltage	-
1834	DC Multimeter	Voltage, Current	500A PN 8255

AC Meters

1836
AC Ammeter
Monitors current on two circuits

Specifications
Display Size 55mm x 28mm
Power Supply 7V-70V DC
Power Consumption 0.3W-1.0W*

Current
Range 0A-150A (300A optional)†
Resolution (100 to 150) 1A
Resolution (0.0 to 99.9) 0.1A
Current Transformer Included 1 x PN 8256 (150A /50mA)
Alarm / Relay Activation High and Low Current



1837
AC Voltmeter
Monitors voltage on two circuits or both legs of 120/240V

Specifications
Display Size 55mm x 28mm
Power Supply 7V-70V DC
Power Consumption 0.3W-1.0W*

Voltage
Range 50V-250V AC (RMS)
Resolution 1V AC
Alarm / Relay Activation High and Low Voltage



1838
AC Multimeter
Monitors voltage, current, frequency, and power on two circuits or both legs of 120/240V

Specifications
Display Size 55mm x 28mm
Power Supply 7V-70V DC
Power Consumption 0.3W-1.0W*

Voltage
Range 50V-250V AC (RMS)
Resolution 1V AC

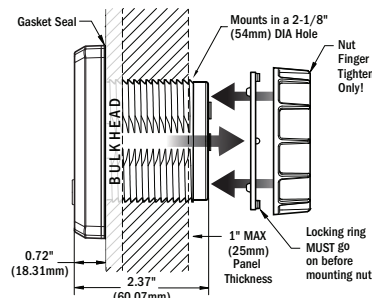
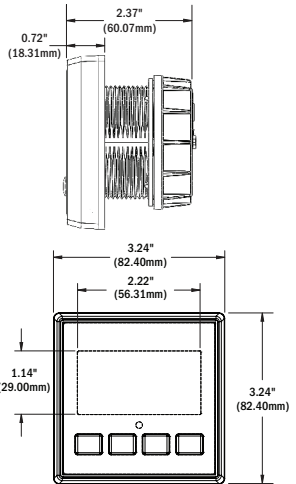
Current
Range 0A-150A (300A optional)†
Resolution (100 to 150) 1A
Resolution (0.0 to 99.9) 0.1A
Current Transformer Included 1 x PN 8256 (150A /50mA)
Alarm / Relay Activation High and Low Voltage, Current, and Frequency



Frequency
Range 40Hz-90Hz
Resolution 1 Hz

Power
Range 0W-45kW
Resolution (0W-9990W) 10W
Resolution (10kW-45kW) 0.1kW

PN	Description	Measurement	Includes Transformer
1836	AC Ammeter	Amperage	150A PN 8256
1837	AC Voltmeter	Voltage	-
1838	AC Multimeter	Voltage, Current, Frequency	150A PN 8256



425 Sequoia Drive
Bellingham, WA 98226 USA
p 360.738.8230
f 360.734.4195
conductor@blueseas.com
www.blueseas.com

Specifications subject to change.
See blueseas.com for current information.
980018840 Rev 002

Regulatory
Monitor face is IP66 - protected against powerful water jets when installed according to instructions

* Variable with voltage, display intensity, and sleep mode

† Will achieve 300A with an optional current transformer PN 1829