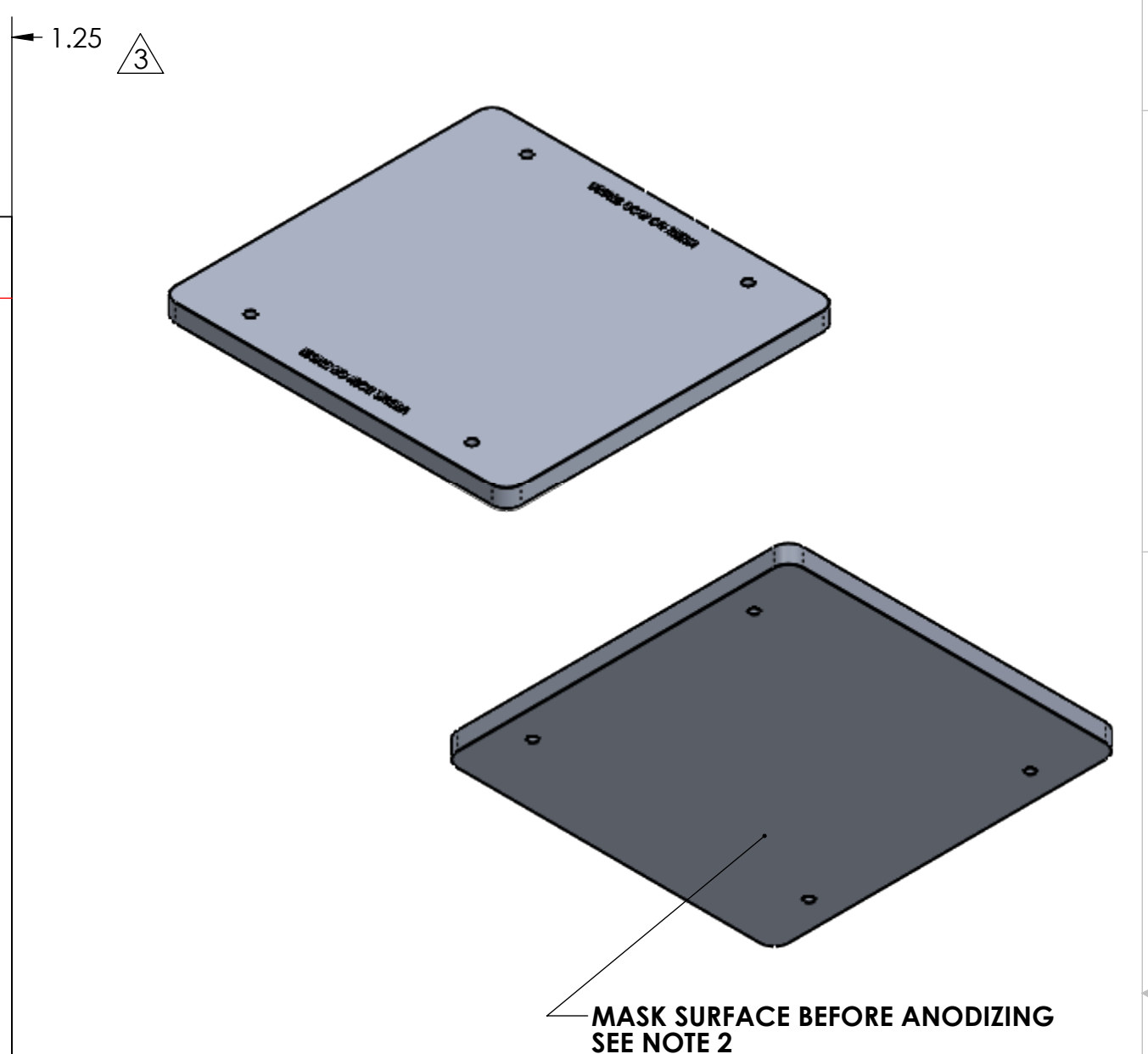
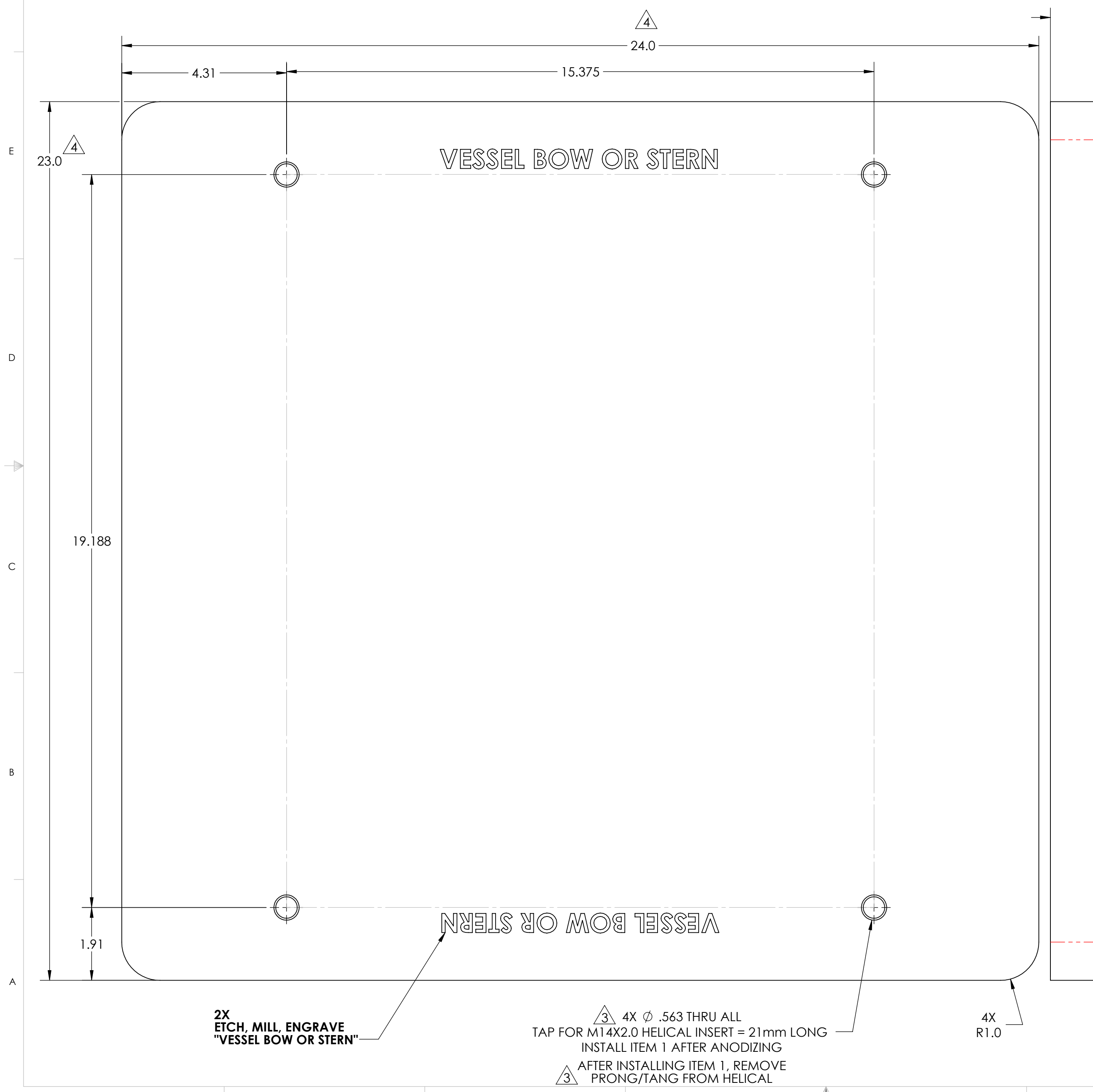


NOTES: 1) UNLESS OTHERWISE SPECIFIED, ALL MACHINED FEATURES ARE TO COMPLY AS FOLLOWS;  
 2 PLACE DECIMAL DIMENSIONS = +/- .010", 3 PLACE DECIMAL DIMENSIONS = +/- .005"  
 FRACTIONAL DIMENSIONS = +/- 1/16", ANGULAR DIMENSIONS X° = +/- 1°, X.X° = +/- .5°  
 ALL DIAMETER RUNOUT TO DATUM FEATURES = .005" MAX.  
 ALL FACES PARALLEL AND PERPENDICULAR TO DATUM SURFACES = .005" MAX.  
 ALL CORNER FILLET RADII = .010"-.030"

SURFACE FINISH TO BE  $\sqrt{63}$  MAX. ROUGHNESS  
 BREAK ALL SHARP EDGES .020" MAX. PER EDGE.  
 2) ANODIZE ALL SURFACES EXCEPT THE BOTTOM AS SHOWN; IN ACCORDANCE WITH MIL-A-8625  
 -TYPE III, CLASS 2 BLACK

REV NO.	ECN NO.	ZONE	DESCRIPTION	DATE	APPRVD.
3			PLATE THICKNESS CHANGED FROM 1.000in TO 1.250in; LENGTH 22.0in TO 24.0in; 4X $\phi$ .571 THRU ALL CHANGED TO $\phi$ .563; AND ADDED NOTE TO REMOVE PRONG/TANG	4/17/2020	WMG
4			LENGTH AND WIDTH DIMENSIONS FLIPPED	7/29/2020	WHK



2X  
ETCH, MILL, ENGRAVE  
"VESSEL BOW OR STERN"

$\triangle 3$  4X  $\phi$  .563 THRU ALL  
TAP FOR M14X2.0 HELICAL INSERT = 21mm LONG  
INSTALL ITEM 1 AFTER ANODIZING  
AFTER INSTALLING ITEM 1, REMOVE  
PRONG/TANG FROM HELICAL

4X  
R1.0

1	60418	THREADED INSERT, HELICAL, M14-2.0 X 21MM LG, SS	MCMasterCARR	91732A671	1
ITEM NO.	PART NUMBER	DESCRIPTION	VENDOR	VENDOR PN	QTY.
		<b>PROPRIETARY AND CONFIDENTIAL</b> THE INFORMATION CONTAINED IN THIS DRAWING IS THE SOLE PROPERTY OF SEAKEEPER INCORPORATED. ANY REPRODUCTION IN PART OR AS A WHOLE WITHOUT THE WRITTEN PERMISSION OF SEAKEEPER IS PROHIBITED.	 Seakeeper Inc. 45310 Abell House Lane, Suite 350 California, MD 20619 NAME: SK1 INSTALLATION PLATE DWG NUMBER: 90564 REV. NO. SHEET NO.: 4 1 OF 1		
WEIGHT - LBS:	67.03				
MATERIAL:	6061-T6	DRAWN: WHK DATE: 09OCT2019 ENG APPR: DMF DATE: 17APR2020 PROD APPR: ---			