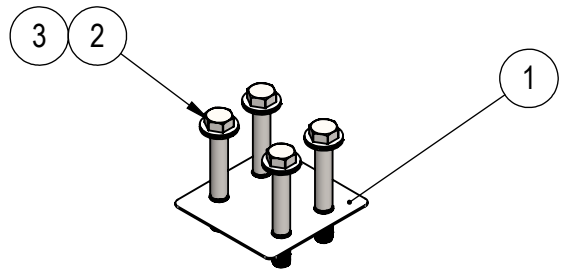
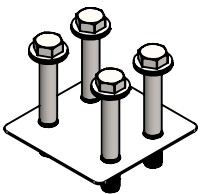
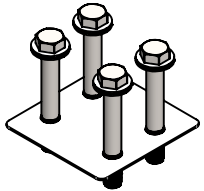


REV NO.	ECN NO.	ZONE	DESCRIPTION	DATE	APPRVD.
1	0757		RELEASED FOR PRODUCTION	11/22/2019	WMG

- NOTE:
- 1) THESE COMPONENTS ARE TO BE USED DURING A DIRECT BOLT-IN INSTALLATION OF SEAKEEPER MODEL 16/18.
 - 2) THE 4 GASKET PADS MUST BE USED BETWEEN THE ALUMINUM SEAKEEPER FRAME AND ANY DISSIMILAR METAL STRUCTURE THAT THE SEAKEEPER WILL BOLT AGAINST.
 - 3) THE BOLTS SUPPLIED ARE GRADE 5 ZINC PLATED ALLOY STEEL, M14-2.0 X 100mm LONG. ANY OTHER LENGTH NEEDED MUST BE SUPPLIED BY INSTALLER. SEAKEEPER RECOMMENDS THE USE OF LOC TITE 243 BLUE THREAD SEALANT ON ALL BOLTS. SEAKEEPER ALSO RECOMMENDS USING A MARINE GRADE SILICONE SEALANT UNDER EACH WEDGE LOCK WASHER TO HELP PREVENT CORROSION OF BOLTS.



ATTACH TO SEAKEEPER,
WIRE TIE TO EYEBOLT

Document Number 90542, Revision 1

SEAKEEPER
SEAKEEPER 18 BOLT-IN CLEARANCES

1. REMINDER! See Bolt-In Installation drawing 90544

ISOLATION GASKET USED WHEN ATTACHING TO METAL STRUCTURE

2. Tight clearances from cable guide bands to hull structure. See below figure for dimensions and reference Seakeeper drawing 90544 for complete Seakeeper envelope.

Page 1 | 1

4	90542	SEAKEEPER 18 BOLT-IN CLEARANCES	---	1	
3	60558	WASHER, WEDGE LOCK 3/4", .79 ID X 1.21 OD.	ALUM/ZINC PLTD	16	
2	60296	HHCS M14-2.0 X 100mm LG. GRD 8.8	ZINC PLTD STL	16	
1	11182	SEAKEEPER 16/18 FRAME ISOLATION GASKET	.063 THK GAROLITE G10	4	
ITEM NO.	PART NO.	DESCRIPTION	MATERIAL	QTY.	NOTE

WEIGHT - LBS: ---		PROPRIETARY AND CONFIDENTIAL		<p>Seakeeper Inc. 45310 Abell House Lane, Suite 350 California, MD 20619</p> <p>NAME: SEAKEEPER 16/18 BOLT-IN KIT</p>	
MATERIAL: ---		THE INFORMATION CONTAINED IN THIS DRAWING IS THE SOLE PROPERTY OF SEAKEEPER INCORPORATED. ANY REPRODUCTION IN PART OR AS A WHOLE WITHOUT THE WRITTEN PERMISSION OF SEAKEEPER IS PROHIBITED.			
DRAWN: WMG		DATE: 22NOV2019			
ENG APPR: DDG		DATE: 22NOV2019			
PROD APPR: ---		DATE: ---		DWG NUMBER 90548	
				REV. NO. SHEET NO. 1 1 OF 1	