

**MG-5075 SERIES**

**MAXIMUM 455 KW (610 HP)  
@ 2500 RPM (PLEASURE CRAFT)**

**STANDARD EQUIPMENT**

MG-5075SC/MG-5075A/MG-5075IV

- Mechanical control valve
- Oil strainer

**MG-5075SC**

- Near coaxial, aluminum housing

**MG-5075A**

- Near coaxial, aluminum housing
- 7° down angle on output shaft

**MG-5075IV**

- Integral V-drive, aluminum housing
- 15° down angle on output shaft

**INPUT RATINGS**

Reduction Ratios :1		Pleasure Craft @ 2500 RPM	Light Duty @ 2300 RPM	Intermediate Duty @ 2100 RPM	Medium Duty @ 1800 RPM	Continuous Duty @ 1800 RPM
<b>MG-5075SC</b>	0.80, 0.92 1.00, 1.16	419 kW (550 hp)	355 kW (476 hp)	268 kW (360 hp)	205 kW (275 hp)	186 kW (249 hp)
	1.06, 1.33, 1.53 1.77, 2.05	455 kW (610 hp)	368 kW (493 hp)	283 kW (380 hp)		
	2.53	410 kW (550 hp)	355 kW (476 hp)	268 kW (360 hp)		
	2.88	403 kW (540 hp)	348 kW (467 hp)	261 kW (350 hp)		
<b>MG-5075A</b>	1.06, 1.33, 1.53 1.77, 2.05	455 kW (610 hp)	368 kW (493 hp)	283 kW (380 hp)	205 kW (275 hp)	186 kW (249 hp)
	2.53	410 kW (550 hp)	355 kW (476 hp)	268 kW (360 hp)		
	2.88	403 kW (540 hp)	348 kW (467 hp)	261 kW (350 hp)		
<b>MG-5075IV</b>	1.06, 1.33, 1.53 1.77, 2.05	423 kW (567 hp)	355 kW (476 hp)	268 kW (360 hp)	205 kW (275 hp)	186 kW (249 hp)

For service classification definitions and important notes refer to the Twin Disc Marine Product Guide or contact Twin Disc directly.  
Ratings shown for use with standard right hand rotation engines. The maximum allowable rated engine speed is 3500 rpm  
(3000 rpm for ratios 0.80:1, 0.92:1, 1.00:1 and 1.16:1).

## OPTIONAL EQUIPMENT

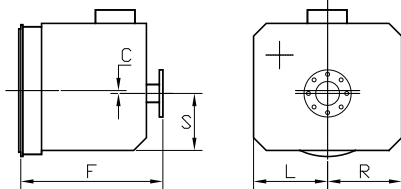
### MG-5075SC/MG-5075A/MG-5075IV

- SAE J617 housing no. 1
- SAE J617 housing no. 2
- SAE J617 housing no. 3
- Flexible coupling for 14" flywheel (SAE J620 size 355)
- Flexible coupling for 11.5" flywheel (SAE J620 size 290)
- Electric control valve (12VDC or 24VDC)
- Mechanical trolling valve
- Oil cooler with thermostatic bypass valve
- Companion flange/bolts set
- Monitoring devices to customer's specification
- Mounting brackets
- Live PTO:
  - SAE J744 size 82-2, 16-4 (SAE "A", 2-bolt) – max. 58 Nm
  - SAE J744 size 101-2/4, 22-4 (SAE "B", 2/4-bolt) – max. 197 Nm
  - SAE J744 size 101-2/4, 25-4 (SAE "B-B", 2/4-bolt) – max. 337 Nm

### MG-5075IV ONLY

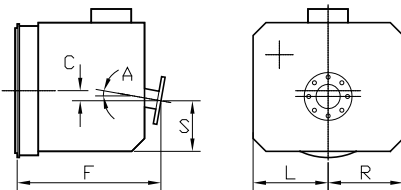
- Input flange for freestanding installation

### MG-5075SC



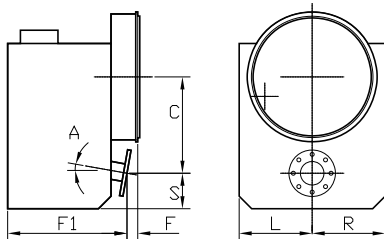
C	15 mm (0.59")
S	178 mm (7.00")
F	373 mm (14.68")
L	254 mm (10.00")
R	254 mm (10.00")
Weight*	123 kg

### MG-5075A



C	48 mm (1.91")
S	178 mm (7.00")
F	358 mm (14.11")
L	254 mm (10.00")
R	254 mm (10.00")
A	7°
Weight*	122 kg

### MG-5075IV



C	373 mm (14.70")
S	100 mm (3.93")
F	71 mm (2.81")
F1	354 mm (13.94")
L	254 mm (10.00")
R	254 mm (10.00")
A	15°
Weight*	150 kg

Twin Disc, Incorporated reminds users of these products that their safe operation depends on use in compliance with engineering information provided in our product guides, installation/assembly drawings and/or manuals. Users are also reminded that safe operation depends on proper installation, operation and routine maintenance and inspection under prevailing conditions. It is the responsibility of users (and not Twin Disc, Incorporated) to provide and install guards or safety devices which may be required by recognized safety standards or by the Occupational Safety and Health Act of 1970 and its subsequent provisions.

USA • AUSTRALIA • BELGIUM • CHINA • INDIA • ITALY • NETHERLANDS • SINGAPORE • SWITZERLAND

Since 1918, we've been putting horsepower to work by designing, engineering and manufacturing rugged-duty industrial products. Our products and our reputation are bolted to the most renowned engine manufacturers and equipment OEMs in the world. Our mission is to make boats, machines and off-highway vehicles more productive, more durable, more operator-friendly, and more cost-effective. From design and installation consultation through after-sale support, Twin Disc and its distributors are committed to your business. No one knows more about managing horsepower in more ways than Twin Disc.

TRANSMISSIONS

ELECTRONIC CONTROLS

EXPRESS JOYSTICK SYSTEM®

SAILDRIVES

EXPRESS POSITIONING\*

ARNESON® SURFACE DRIVES

MARINE CONTROL DRIVES

ROLLA™ PROPELLERS

THRUSTERS

VETH PROPULSION SYSTEMS

STEERING SYSTEMS

RUDDERS

TRIM TABS

PUMP DRIVES

PTOS



Twin Disc, Incorporated  
Racine, Wisconsin 53403 USA

Phone +1-262-638-4000

Fax +1-262-638-4482

www.twindisc.com

2204\_Bulletin\_MG-5075\_Series

© 2022, Twin Disc, Incorporated

Printed in the USA