

Maximum 530 kW (710 hp) @2300 RPM (PLEASURE CRAFT)

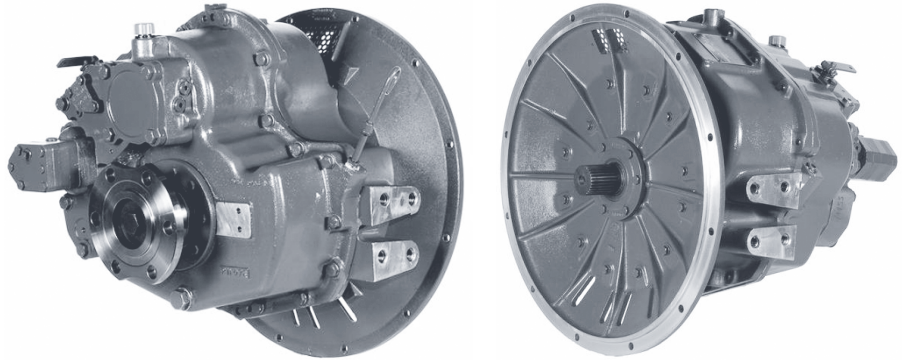
**STANDARD EQUIPMENT**

**MG-5082SC**

- Near coaxial, aluminum housing
- Mechanical control valve
- Oil strainer

**MG-5082A**

- Near coaxial, aluminum housing
- 7° down angle on output shaft
- Mechanical control valve
- Oil strainer



**INPUT RATINGS - KILOWATS (KW) (HORSEPOWER (HP))\***

For service classification definitions and important notes refer to [www.twindisc.com](http://www.twindisc.com), the Twin Disc Marine Product Guide or contact Twin Disc directly.

**MG-5082SC**

Reduction Ratios :1	Pleasure Craft @ 2300 RPM	Light Duty @ 2300 RPM	Intermediate Duty @ 2100 RPM	Medium Duty @ 1800 RPM	Continuous Duty @ 1800 RPM
1.06, 1.11 1.33, 1.53 1.77, 2.05 2.28	530 kW (710 hp)	460 kW (617 hp)	351 kW (471 hp)	301 kW (404 hp)	262 kW (351 hp)
2.53	492 kW (660 hp)				
2.88	447 kW (600 hp)	418 kW (560 hp)	340 kW (456 hp)	273 kW (366 hp)	

**MG-5082A**

Reduction Ratios :1	Pleasure Craft @ 2300 RPM	Light Duty @ 2300 RPM	Intermediate Duty @ 2100 RPM	Medium Duty @ 1800 RPM	Continuous Duty @ 1800 RPM
1.06, 1.33, 1.53 1.77, 2.05, 2.28	530 kW (710 hp)	460 kW (617 hp)	351 kW (471 hp)	301 kW (404 hp)	262 kW (351 hp)
2.53	492 kW (660 hp)				
2.88	447 kW (600 hp)	418 kW (560 hp)	340 kW (456 hp)	273 kW (366 hp)	

\* Ratings shown for use with standard right-hand rotation engines.  
The maximum allowable rated engine speed is 3200 rpm.



Specifications subject to change without prior notice in the interest of continual product improvement.  
Contact your local Twin Disc representative for engineering specifications, Survey Society Approvals  
and Classifications.

Scan QR code to see Twin Disc's entire Marine product line.



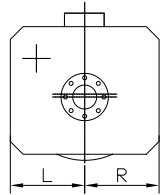
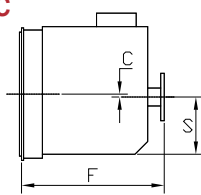
## OPTIONS

	MG-5082SC	MG-5082A
SAE J617 housing no. 1	X	X
SAE J617 housing no. 2	X	X
Flexible coupling for 14" flywheel (SAE J620 size 355)	X	X
Flexible coupling for 11.5" flywheel (SAE J620 size 290)	X	X
Electric control valve (12 VDC or 24 VDC)	X	X
Mechanical trolling valve	X	X
Oil cooler with thermostatic bypass valve	X	X
Companion flange/bolts set	X	X
Monitoring devices to customer's specification	X	X
Mounting brackets	X	X
Live PTO		
SAE J744 size 82-2, 16-4 (SAE "A", 2-bolt) - max. 58 Nm	X	X
SAE J744 size 101-2/4, 22-4 (SAE "B", 2/4-bolt) - max. 197 Nm	X	X
SAE J744 size 101-2/4, 25-4 (SAE "B-B", 2/4-bolt) - max. 337 Nm	X	X
Dry weight incl. SAE #1 housing and SAE 355 flexible coupling	135 kg	135 kg

For nearly a century, we've been making boats perform better and more reliably. From system-design consultation to application development to in-service support, Twin Disc provides fully integrated propulsion solutions that will optimize your craft's performance, reliability and safety over the years. Bring Twin Disc aboard early in the development process, and you'll enjoy a lifetime of enhanced operating value.

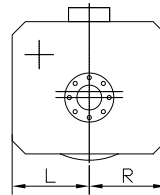
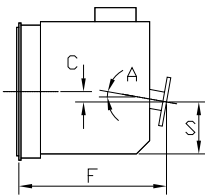
TRANSMISSIONS • ELECTRONIC CONTROLS • EXPRESS JOYSTICK SYSTEM® • SAILDRIVES • EXPRESS POSITIONING® • ARNESON SURFACE DRIVES • MARINE CONTROL DRIVES • ROLLA PROPELLERS • BOW & STERN THRUSTERS • STEERING SYSTEMS • RUDDERS • TRIM TABS

### MG-5082SC



C	15 mm (0.59")
S	178 mm (7.00")
F	413 mm (16.24")
L	254 mm (10.00")
R	254 mm (10.00")

### MG-5082A



C	54 mm (2.12")
S	178 mm (7.00")
F	405 mm (15.97")
L	254 mm (10.00")
R	254 mm (10.00")
A	7°

Twin Disc, Incorporated reminds users of these products that their safe operation depends on use in compliance with engineering information provided in our catalog. Users are also reminded that safe operation depends on proper installation, operation and routine maintenance and inspection under prevailing conditions. It is the responsibility of users (and not Twin Disc, Incorporated) to provide and install guards or safety devices which may be required by recognized safety standards or by the Occupational Safety and Health Act of 1970 and its subsequent provisions.

United States of America • Australia • Belgium • Canada • China • India • Italy • Singapore • Switzerland



Twin Disc, Incorporated  
Racine, Wisconsin 53403 USA  
Phone +1-262-638-4000  
Fax +1-262-638-4482  
www.twindisc.com

*TD-Bulletin-MG-5082\_Series*  
© 2016, Twin Disc, Incorporated  
Printed in the USA - 1/2016