



ADVANTEC ADVANTAGE

WE ARE PASSIONATE ABOUT DELIVERING



3 YEAR
HASSLE-FREE
WARRANTY

RELIABLE *SOLUTIONS*
SUPERIOR *QUALITY*
WORLD-CLASS *SUPPORT*

RAISING THE BAR ON CRANE PERFORMANCE



Proudly part of the **AdvanTec** family of brands



ADVANTEC GLOBAL INNOVATIONS



ADVANTEC MARINE



ADVANTEC MARINE

WWW.ADVANTECMARINE.COM



FURUNO

FURUNO

STEELHEAD MARINE
ES 1000



CLIFF

ADVANTEC ADVANTAGE



**3 YEAR
HASSLE-FREE
WARRANTY**

WE ARE PASSIONATE ABOUT DELIVERING

RELIABLE **SOLUTIONS**

SUPERIOR **QUALITY**

WORLD-CLASS **SUPPORT**

ABOUT US

RAISING THE BAR ON CRANE PERFORMANCE

ABOUT STEELHEAD MARINE

Steelhead Marine's elegantly designed, high-tech cranes are renowned across the industry. Through persistence, innovation, and hard work they are aiming to become the leader in advancing hydraulic solutions for the yachting world.

With strong leadership and a dynamic workforce, Steelhead is working to take their innovative products to the next level of sophistication. A diligent sales, engineering, design and build process combined with a close working relationship with their clients ensures Steelhead products will be at the forefront of innovation in the global yacht market.

ABOUT ADVANTEC:

AdvanTec is a collaboration of brands that specializes in the design, engineering, and manufacturing of a wide variety of marine products. As one of the largest marine manufacturers in the world, with over 150 years of experience collectively from their brands, they have been one of the leaders in innovation and creative manufacturing systems.

BENEFITS OF STEELHEAD MARINE

Engineered for Performance

- Greater lift capacity with less crane weight
- Superior engineering and advanced materials
- Durability, strength and reliability
- Compact and attractive design that puts less space and weight demands on your yacht
- Whisper quiet linear winches use composite rope which is quieter and stronger than steel cable
- Our cranes are proof tested to minimum 110% capacity
- All ES and CT series cranes provided with wireless controls

OUR WARRANTY

HASSLE-FREE



We are committed to delivering solutions that meet our customer's requirements. We offer after-sales service and commissioning support for all products sold.

All Non-Powered Equipment:

- Platinum Warranty - 3 years from date of shipment

All Powered Equipment:

- Standard Warranty - 2 years from date of shipment
- 1 year extension - Onsite commissioning required by AdvanTec Marine or certified technician

Scan for more information



TABLE OF CONTENTS

HIGH PERFORMANCE CRANES

STEELHEAD MARINE CRANE SERIES OVERVIEW	6
STEELHEAD MARINE CRANE SPECS OVERVIEW	7
CRANE CONTROLLERS OVERVIEW	8

SPEC SHEETS

LW SERIES	10
WD SERIES	11
E SERIES	12
ES SERIES	14
CT SERIES	16

RESOURCES

DEFINITIONS	19
MOUNTING CONFIGURATIONS	20
DIGITAL LIBRARY	22
REPLACEMENT PARTS STORE	23
SALES AND SUPPORT	24
SERVICE AND SUPPORT	25
ORDER FORM	26
NOTES	27

STEELHEAD MARINE CRANE

SERIES OVERVIEW

LW Series (Light Weight)

LW Series offers Manual or Electric winch operation with hinging base for storage

Weight Range: 250-350 LBS



WD Series

Whisper-quiet, low lift requirements, compact, sleek, and dual function davits.

Weight Range: 600-1,000 LBS



E Series

Lightweight aluminum crane with standard two function (luffing & lifting) operation.

Weight Range: 1,000-1,750 LBS



ES Series

Lightweight, super efficient, low profile European design with four-function hydraulics. Comes standard with wireless controller.

Weight Range: 1,000-2,500 LBS



CT Series

Fabricated heavy duty four function hydraulic cranes with standard or customizable features. Standard with wireless & wired pendant controllers.

Weight Range: 2,000-10,000 LBS



STEELHEAD MARINE CRANE

SPECS OVERVIEW

SERIES	FUNCTIONS	MODEL	CAPACITY		REACH		HOIST		RETRACTED LENGTH		WEIGHT	
			LBS	KG	FT	M	FT	M	FT	M	LBS	KG
LW SERIES	12v DC Winch or Manual Hand Crank	LW250	250	113	5.3	1.6	8	2.4	NA	NA	66/72	30/32
		LW350	350	158	5.3	1.6	8	2.4	NA	NA	78/84	35/38

SERIES	HYDRAULIC FUNCTIONS	MODEL	CAPACITY		REACH		HOIST		RETRACTED LENGTH		WEIGHT	
			LBS	KG	FT	M	FT	M	FT	M	LBS	KG
WD SERIES	Hoisting Power Luffing	WD600	600	363	8	2.4	17	5.2	NA	NA	215	98
		WD800	800	363	8	2.4	17	5.2	NA	NA	215	98
		WD1000	1000	454	8	2.4	17	5.2	NA	NA	235	107
E SERIES	Hoisting Luffing	E1000	1000	454	10	3.0	16	4.9	6	1.8	384	174
		E1100	1100	500	10	3.0	16	4.9	6	1.8	369	167
		E1500	1500	680	12	3.7	20	6.1	7	2.1	582	263
		E1750	1750	794	12	3.6	20	6	7	2.1	610	276
ES SERIES	Hoisting Luffing Rotation Extension	ES1000	1000	454	10	3.0	16	4.9	6	1.8	384	174
		ES1100	1100	500	10	3.0	16	4.9	6	1.8	384	174
		ES1500	1500	680	12	3.7	20	6.1	7	2.1	602	273
		ES1750	1750	794	12	3.6	20	6	7	2.1	630	285
		ES2200	2200	1000	14	4.3	22	6.7	8	2.4	1150	521
		ES2500	2500	1131	14	4.3	22	6.7	8	2.4	1150	521
CT SERIES	Hoisting Luffing Rotation Extension	CT2000	2000	907	18/20	5.5/6.1	24	7.3	12	3.7	1050	476
		CT2500	2500	1134	18/20	5.5/6.1	24	7.3	12	3.7	1150	522
		CT3000	3000	1361	16	4.9	24	7.3	11	3.4	1150	522
		CT3500	3500	1588	18/20	5.5/6.1	24	7.3	13	4.0	1700	771
		CT4000	4000	1814	20	6.1	30	9.1	12.5	3.8	2100	953
		CT5000	5000	2268	20	6.1	30	9.1	12.5	3.8	2400	1089
		CT6000	6000	2722	20/30	6.1/9.1	30	9.1	12.5	3.8	2600	1179
		CT10000	10000	4536	TBD	TBD	TBD	TBD	TBD	TBD	TBD	TBD

CRANE CONTROLLERS

OVERVIEW

LW WIRED CONTROLLER
PN/114918



WD CONTROLLER
PN/104921



NON-PROPORTIONAL
PN/104916 - 15' Cord



PROPORTIONAL
PN/104917 - 15' Cord
PN/104922 - 20' Cord



FEATURES

- | | | | |
|---|---|--|--|
| <ul style="list-style-type: none"> WIRED 12' LEAD SINGLE FUNCTION CONTROLLER ROPE | <ul style="list-style-type: none"> WIRED 6' LANYARD 2 FUNCTION CONTROLLER ROPE, LUFFING | <ul style="list-style-type: none"> WIRED 15' LEAD 4 FUNCTION CONTROLLER ROPE, ROTATION, LUFFING, EXTENSION | <ul style="list-style-type: none"> WIRED 15' LEAD OR 20' LEAD 4 FUNCTION CONTROLLER ROPE, ROTATION, LUFFING, EXTENSION |
|---|---|--|--|

APPLICATION

LW250 & LW350	WD600, WD800, WD1000	E1000, E1100, ES1000, ES1100	ES1500, ES1750, CT2000, CT2500, CT3500, CT4000, CT5000, CT6000
---------------	----------------------	------------------------------	--

LW WIRELESS CONTROLLER
PN/114919



HEIGHT 2.25"

WIDTH 4.00"

MICRO CONTROLLER
PN/106251



HEIGHT 2.80"

WIDTH 1.75"

MACRO CONTROLLER
PN/113835



HEIGHT 4.70"

WIDTH 2.59"

PROPORTIONAL GUIDER
PN/104926



HEIGHT 8.60"

WIDTH 1.75"

FEATURES

- | | | | |
|--|--|--|---|
| <ul style="list-style-type: none"> WIRELESS 2 CONTROLLERS DUAL ACTING SOLENOID RANGE UP TO 50' SINGLE FUNCTION CONTROLLER ROPE | <ul style="list-style-type: none"> WIRELESS 4 FUNCTION CONTROLLER ROPE, ROTATION, LUFFING, EXTENSION BATTERY LIFE 40 HOURS MICRO USB CHARGER RANGE UP TO 600' CLONEABLE TRANSMITTER
<small>(CAN HAVE MORE THAN ONE CONTROLLER PER RECEIVER)</small> | <ul style="list-style-type: none"> WIRELESS 4 FUNCTION CONTROLLER ROPE, ROTATION, LUFFING, EXTENSION BATTERY LIFE 40 HOURS MICRO USB CHARGER RANGE UP TO 600' CLONEABLE TRANSMITTER
<small>(CAN HAVE MORE THAN ONE CONTROLLER PER RECEIVER)</small> | <ul style="list-style-type: none"> WIRELESS 4 FUNCTION CONTROLLER ROPE, ROTATION, LUFFING, EXTENSION PROPORTIONAL TRIGGER CONTROLLED TWIST TO RELEASE E-STOP SAFE SHUTDOWN RANGE UP TO 1000' RECHARGEABLE BATTERY |
|--|--|--|---|

APPLICATION

LW250 & LW350	ES1000 & ES1100	ES1000 & ES1100	ES1500, ES1750, ES2200, ES2500, ALL CT CRANES
---------------	-----------------	-----------------	---

SPECIFICATION SHEETS

LW SERIES

250 & 350

LW cranes provide the functionality to easily lift small tenders and equipment on or off your vessel or dock with ease. The crane can be folded down for easy storage.

STANDARD FEATURES

- 360° Manual Rotation
- 12v DC Electric Winch
- Amsteel Blue™ Synthetic Rope
- Powder coated finish
- Proof tested to 110% capacity
- Wired Controller

OPTIONAL FEATURES

- Manual Hand Crank Winch
- Wireless Controller

SERIES	FUNCTIONS	MODEL	CAPACITY		REACH		HOIST		RETRACTED LENGTH		WEIGHT	
			LBS	KG	FT	M	FT	M	FT	M	LBS	KG
LW SERIES	12v DC Winch or Manual Hand Crank	LW250	250	113	5.3	1.6	8	2.4	NA	NA	66/72	30/32
		LW350	350	158	5.3	1.6	8	2.4	NA	NA	78/84	35/38

LW Wireless Controller

PN/114919



LW Wired Controller

PN/114918



MANUAL HAND CRANK



LAYDOWN HINGED BASE COLLAPSED VIEW



LAYDOWN HINGED BASE



SCAN TO VISIT OUR PARTS STORE
advantecstore.com/collections/lw-series

WD SERIES

600, 800 & 1000

A testament to engineering excellence, the WD Series is designed to deliver unparalleled performance. These cranes are crafted for those who demand the best in both functionality and design. With a range of standard and customizable mounting configurations, the WD Series ensures a perfect integration with your vessel. Each crane features a compact design, making it ideal for space-conscious installations. The easy-to-operate crane offers two essential functions: Luffing & Winch. Its hydraulic system ensures smooth and precise movements. Plus, control is at your fingertips with the included 6-foot wired controller. Backed by our **3-year hassle-free warranty**, the WD Series is your reliable lifting solution.

STANDARD FEATURES

- 350° Manual Rotation
- Amsteel Blue™ Synthetic Rope
- Power Luffing
- Easy Installation
- Proof tested to 110% capacity
- Yacht Quality Paint Finish or Powder Coated
- 12v DC or 24v DC Power Unit

OPTIONAL FEATURES

- Wireless Controllers
- Custom Specifications Available Upon Request

SERIES	HYDRAULIC FUNCTIONS	MODEL	CAPACITY		REACH		HOIST		RETRACTED LENGTH		WEIGHT	
			LBS	KG	FT	M	FT	M	FT	M	LBS	KG
WD SERIES	Hoisting Power Luffing	WD600	600	363	8	2.4	17	5.2	NA	NA	215	98
		WD800	800	363	8	2.4	17	5.2	NA	NA	215	98
		WD1000	1000	454	8	2.4	17	5.2	NA	NA	235	107

MOUNTING OPTIONS

- Standpipe
 - WD 600/800: 4.5" OD
 - WD 1000: 5.25" OD
- Pedestal Base
- FRP HPU Base (shown)



SCAN TO VISIT OUR PARTS STORE
advantecstore.com/collections/wd-series

E SERIES

1000, 1100, 1500 & 1750

Designed for reliability and performance, our E Series cranes combine robust engineering with practical features. With the option to customize certain functionalities, these cranes are ideal for yacht, commercial, or recreational use. Plus, enjoy peace of mind with our **3-year hassle-free warranty**. Elevate your lifting capabilities with the E Series – quality without compromise.



E SERIES

STANDARD FEATURES

- 350° Rotation
- Low Profile Design
- 2 function Hydraulics (Luffing, Hoisting)
- 12v DC or 24v DC Power Units
- Yacht Quality Paint Finish
- Amsteel Blue™ Synthetic Rope
- Proof Tested to 110% Capacity
- Wireless Control

OPTIONAL FEATURES

- Power Rotation, Power Extension
- Wired Controllers
- 230V AC Power
- Color Match Finish
- Custom Specifications Available Upon Request

SERIES	HYDRAULIC FUNCTIONS	MODEL	CAPACITY		REACH		HOIST		RETRACTED LENGTH		WEIGHT	
			LBS	KG	FT	M	FT	M	FT	M	LBS	KG
E SERIES	Hoisting Luffing	E1000	1000	454	10	3.0	16	4.9	6	1.8	384	174
		E1100	1100	500	10	3.0	16	4.9	6	1.8	369	167
		E1500	1500	680	12	3.7	20	6.1	7	2.1	582	263
		E1750	1750	794	12	3.6	20	6	7	2.1	610	276

STANDARD MOUNTING OPTIONS

Custom Bases Available Upon Request

E1000

- 5.25" OD - Standpipe
- 16"x19" - Aluminum Round Base
- 24"x30" - FRP HPU Base
- 24"x24" - Aluminum Square Base (16" and 22" High)

E1100

- 6.625" OD - Standpipe
- 16"x19" - Aluminum Round Base
- 24"x30" - FRP HPU Base
- 24"x24" - Aluminum Square Base (16" and 22" High)

E1500

- 6.625" OD - Standpipe
- 16"x19" - Round Base
- 24"x30" - Aluminum HPU Base
- 24"x24" - Square Base

E1750

- 9" Standpipe
- 16"x19" - Round Base
- 24"x30" - Aluminum HPU Base
- 24"x24" - Square Base

STANDARD CONTROLLERS



MICRO CONTROLLER

PN/106251
INCLUDED WITH E1000/E1100



PROPORTIONAL GUIDER

PN/104926
INCLUDED WITH E1500/E1750



SCAN TO VISIT OUR PARTS STORE

advantecstore.com/collections/wd-series

ES SERIES

1000, 1100, 1500, 1750, 2200 & 2500

Elevate your lifting capabilities with this sleek and powerful crane. Designed with a yacht-inspired aesthetic, it seamlessly blends form and function. Enjoy peace of mind with our **3-year hassle-free warranty** – a testament to its reliability. The ES Series boasts robust engineering, featuring **standard four-function operation** for versatile lifting. And with the convenience of a **wireless controller**, you'll have precise control at your fingertips. Discover the perfect balance of style, performance, and ease of use with the ES Series Crane.



ES SERIES

STANDARD FEATURES

- 4 Powered Function
 - Luffing, Rotation, Extension & Hoisting
 - ES1000-ES1750: 355° Rotation
 - ES2200 & 2500: Infinite Rotation
- Amsteel Blue™ Synthetic Rope
- Proof Tested to 110% Capacity
- Yacht Quality Paint Finish
- 12v DC or 24v DC
- Wireless Control System

OPTIONAL FEATURES

- Wired Controllers
- A/C Powered Hydraulic Power Unit
- Custom Specifications Available Upon Request

SERIES	HYDRAULIC FUNCTIONS	MODEL	CAPACITY		REACH		HOIST		RETRACTED LENGTH		WEIGHT	
			LBS	KG	FT	M	FT	M	FT	M	LBS	KG
ES SERIES	Hoisting Luffing Rotation Extension	ES1000	1000	454	10	3.0	16	4.9	6	1.8	384	174
		ES1100	1100	500	10	3.0	16	4.9	6	1.8	384	174
		ES1500	1500	680	12	3.7	20	6.1	7	2.1	602	273
		ES1750	1750	794	12	3.6	20	6	7	2.1	630	285
		ES2200	2200	1000	14	4.3	22	6.7	8	2.4	1150	521
		ES2500	2500	1131	14	4.3	22	6.7	8	2.4	1150	521

STANDARD MOUNTING OPTIONS

Custom Bases Available Upon Request

ES1000

- 5.25" OD - Standpipe
- 16"x19" - Aluminum Round Base
- 24"x30" - FRP HPU Base
- 24"x24" - Aluminum Square Base (16" and 22" High)

ES1100

- 6.625" OD - Standpipe
- 16"x19" - Aluminum Round Base
- 24"x30" - FRP HPU Base
- 24"x24" - Aluminum Square Base (16" and 22" High)

ES1500

- 6.625" OD - Standpipe
- 16"x19" - Round Base
- 24"x30" - Aluminum HPU Base
- 24"x24" - Square Base

ES1750

- 9" - Standpipe
- 16"x19" - Round Base
- 24"x30" - Aluminum HPU Base
- 24"x24" - Square Base

ES2200/ ES2500

- 8.625" - Standpipe (Standard)
- 16"x19" - Round Base
- 24"x24" - Square Base



SCAN TO VISIT OUR PARTS STORE

advantecstore.com/collections/es-series

STANDARD CONTROLLERS



MICRO CONTROLLER

PN/106251
INCLUDED WITH ES1000/ES1100



PROPORTIONAL GUIDER

PN/104926
INCLUDED WITH ES1500/ES1750
ES2200/ES2500



PROPORTIONAL CONTROLLER

PN/104917 - 15' Cord
PN/104922 - 20' Cord
INCLUDED WITH ES2200/ES2500

CT SERIES

2000, 2500, 3000, 3500, 4000, 5000, 6000 & 10000

Tailored for the discerning needs of the yacht market, our cranes offer both **standard and custom reach options** to ensure a perfect fit for your vessel.

- **Proportional Wireless Guider:** Seamlessly control crane movements with precision using our wireless guider. Whether launching a tender or recovering it, safety and accuracy are guaranteed.
- **Wired Proportional Controller with Speed Trigger:** Take command of crane operations with the wired proportional controller. The speed trigger allows you to adjust movement speed, ensuring safe and efficient handling.

Backed by a **3-year hassle-free warranty**, these cranes are not only a symbol of strength but also a testament to our dedication to quality and customer satisfaction. Choose the CT Series for a lifting solution that meets your demands with elegance and efficiency.



CT SERIES

STANDARD FEATURES

- Infinite Rotation
- 4 Powered Function
 - Luffing, Rotation, Extension & Hoisting
- 12v or 24v DC Power Units
- Yacht Quality Paint Finish
- Amsteel Blue™ Synthetic Rope
- Proof Tested to 125% Capacity
- Wired/Wireless Controllers

OPTIONAL FEATURES

- Wired Controllers
- 230v AC Power
- Color Match Finish
- Custom Specifications Available Upon Request

SERIES	HYDRAULIC FUNCTIONS	MODEL	CAPACITY		REACH Custom reaches available		HOIST		RETRACTED LENGTH		WEIGHT	
			LBS	KG	FT	M	FT	M	FT	M	LBS	KG
CT SERIES	Hoisting Luffing Rotation Extension	CT2000	2000	907	18/20	5.5/6.1	24	7.3	12	3.7	1050	476
		CT2500	2500	1134	18/20	5.5/6.1	24	7.3	12	3.7	1150	522
		CT3000	3000	1361	16	4.9	24	7.3	11	3.4	1150	522
		CT3500	3500	1588	18/20	5.5/6.1	24	7.3	13	4.0	1700	771
		CT4000	4000	1814	20	6.1	30	9.1	12.5	3.8	2100	953
		CT5000	5000	2268	20	6.1	30	9.1	12.5	3.8	2400	1089
		CT6000	6000	2722	20/30	6.1/9.1	30	9.1	12.5	3.8	2600	1179
		CT10000	10000	4536	TBD	TBD	TBD	TBD	TBD	TBD	TBD	TBD

STANDARD MOUNTING OPTIONS

Custom Bases Available Upon Request custom reach is available

CT2000/ CT2500 /CT3000

- 8.625" OD - Standpipe
- 16"x19" Round Base
- 24"x24" Square Base

CT3500

- 10.75" OD - Standpipe
- 22"x24" - Aluminum Round Base
- 24"x24" - Aluminum Square Base (16" High)

CT4000/ CT4500/ CT5000

- 12.75" OD - Standpipe
- 26"x24" Round Base
- 36"x36" Square Base (24" High)

CT6000

- 12.75" OD - Standpipe
- 22"x29" Round Base
- 36"x36" Square Base (24" High)

CT10000

- Mounting configurations TBA



SCAN TO VISIT OUR PARTS STORE
advantecstore.com/collections/ct-series

STANDARD CONTROLLERS



PROPORTIONAL CONTROLLER
 PN/104917 - 15' Cord
 PN/104922 - 20' Cord



PROPORTIONAL GUIDER
 PN/104926

RESOURCES

DEFINITIONS

CRANE FUNCTIONS

1. Luffing: Refers to the up/down direction of the crane boom
2. Hoisting: Crane rope up/down direction
3. Rotation: Powered or manual rotation of the crane – Also referred to as Slewing
4. Extension: Steelhead cranes come with a powered or manual extension on the boom, example ES1000 6' retracted length, extended length 10'

FINISH OPTIONS

We offer 3 finishes for our cranes (crane model dependent)

1. Wet Paint – Premium Yacht Paint and Primer System to provide resistance against corrosion, UV rays and weather – custom colors available for a fee.
2. Powder Coated: A durable and protective finish that provides resistance against corrosion, UV rays, and harsh weather conditions.
3. Anodized: An electrochemical process that enhances the surface of aluminum cranes, making them more resistant to wear, scratches, and environmental factors.

LOAD CAPACITY

(ALSO REFERRED TO AS SAFE WORKING LOAD – SWL)

The safe working load the crane is rated. Steelhead cranes are badged with the safe working load – ie. ES1500 would have a SWL of 1500lbs. The load capacity refers to the maximum weight our cranes can safely lift. It is essential to choose the right crane based on your specific lifting requirements. Our product specifications provide detailed information on load capacities for different models.

LOAD TEST

Steelhead cranes are load tested to 110% or 125% of capacity during testing.

BOOM LENGTH (REACH)

The boom length would be the maximum reach in the extended position. Customers should consider their operational needs when selecting a crane with an appropriate boom length. measured from center of rotation.

SLEWING RADIUS

The slewing radius defines the circular area within which the crane can rotate. For Steelhead cranes, it is also the same as the Extended Boom length. Our cranes are rated to lift the SWL in any position.

HOIST

Steelhead cranes utilize Sampson Blue – a 12 bundle composite rope. Hoist refers to the length of rope available at the boom tip.

ROPE

Steelhead Marine cranes uses Amsteel Blue™ Synthetic Rope, in place of steel braid.

MOMENT

Is the force exerted on the crane at it's mounting point. Ie. A boom length of 20 feet lifting 2500 lbs would be 50,000 foot pounds (20'x2500lbs).

HPU

HPU stands for Hydraulic Power unit – the powerpack used to operate the hydraulic functions of the crane.

SHEAVES

The roller system that the rope travels around inside the crane on the linear winch.

LINEAR WINCH

A reverse block and tackle arrangement allowing the rope to travel up and down utilizing a cylinder (expanding and contracting). The linear winch has the sheave kit at both ends of the cylinder .

EXTENSION

Powered or manual extension available (model dependent).

MOUNTING OPTIONS

1. Standpipe – Aluminum Pipe used to mount crane to deck, typically installed between main deck and upper deck.
2. Deck Mounted bases: Steelhead had a number of bases available; Square, round, FRP and HPU Bases – HPU base allows the HPU to be mounted in the base directly below the crane,
3. Direct Mount Spacer plate – used to mount crane direct to deck or mounting surface (provided by customer)

POWER OPTIONS AVAILABLE

1. 24v DC
2. 12v DC
3. 220-240 AC (single or three phase) 50 or 60 hz

CONTROLLERS (PENDANTS)

Wired - Direct corded controller
Wireless – wireless receiver

DRY WEIGHT:

Describes the tender weight incl motor, with no fuel, water or extraneous goods.

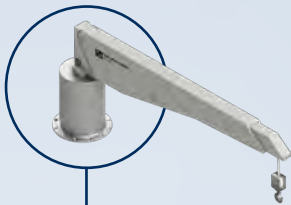
WET WEIGHT:

Describes the total weight including fuel, water or any other goods resident in the tender.

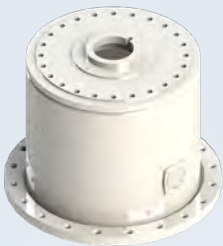
MOUNTING CONFIGURATIONS

STANDPIPE

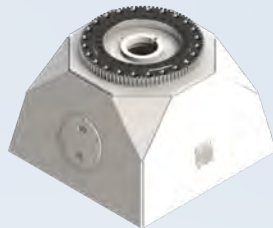
Redefining versatility with our range of mounting configurations. Whether you require standard solutions or customizable options, our cranes are designed to adapt to your specific needs. Our commitment to innovation ensures that every crane integrates seamlessly with your vessel, providing optimal performance and aesthetics. With Steelhead Marine, you have the freedom to choose the perfect fit for your maritime operations.



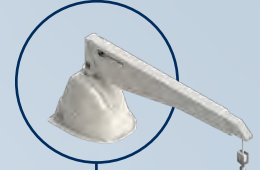
ROUND
BASE



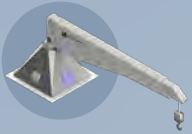
SQUARE
BASE



HPU
BASE



PEDESTAL
BASE



Custom Bases Available Upon Request

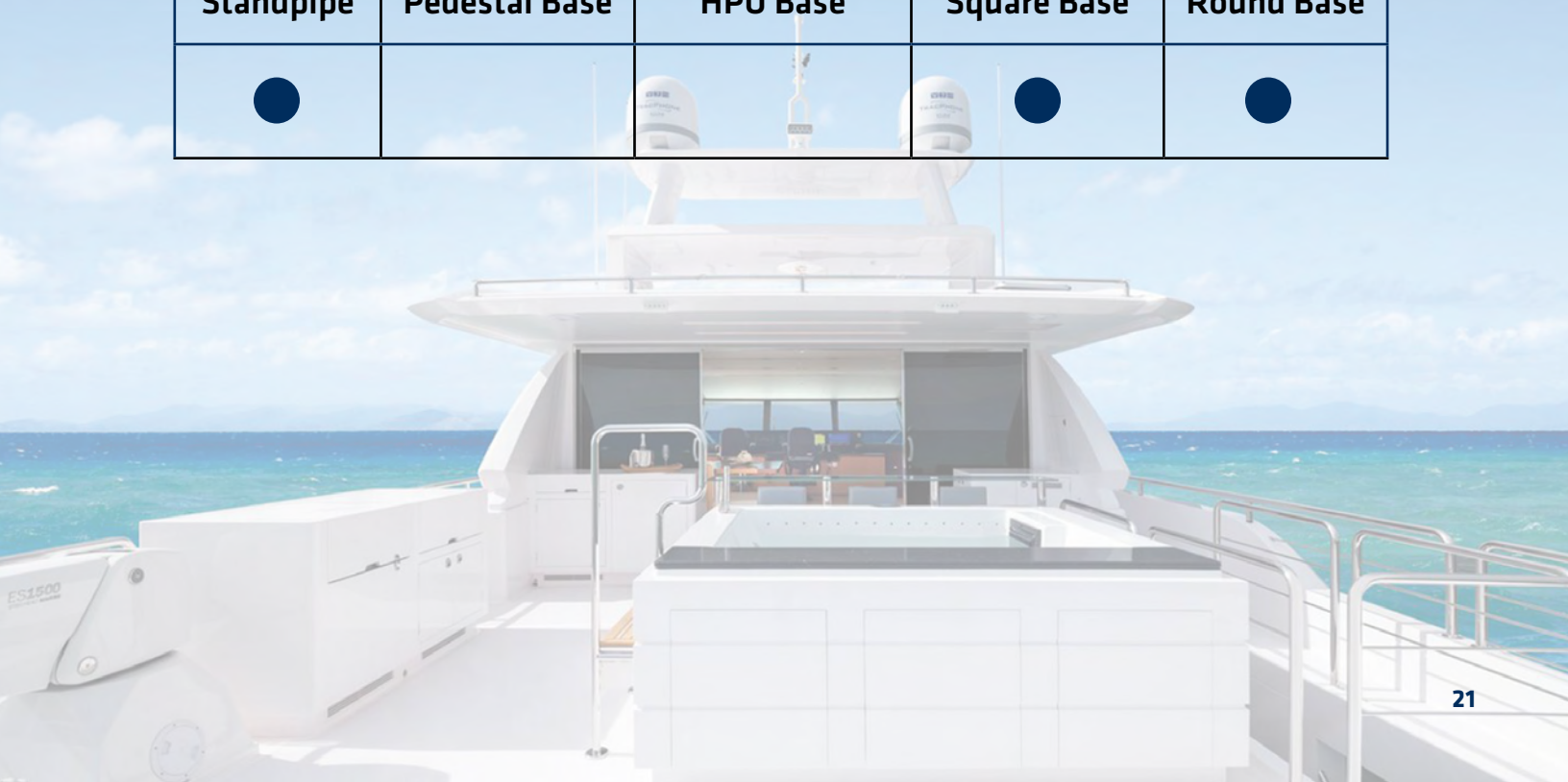
MOUNTING CONFIGURATIONS

WD SERIES				
Standpipe	Pedestal Base	HPU Base	Square Base	Round Base
●	●	●	●	●

E SERIES				
Standpipe	Pedestal Base	HPU Base	Square Base	Round Base
●	●	●	●	●

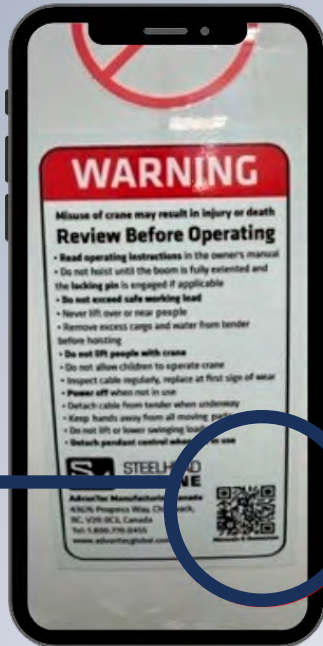
ES SERIES				
Standpipe	Pedestal Base	HPU Base	Square Base	Round Base
●	●	●	●	●

CT SERIES				
Standpipe	Pedestal Base	HPU Base	Square Base	Round Base
●		●	●	●



UNLOCK EXPERT GUIDANCE ON-THE-GO

Explore Steelhead Marine's Digital Library



Scan the QR code here or at the back of your crane to access the crane manuals & other resources



Your Virtual Technician Anytime, Anywhere!

Visit our website:
www.advantecmarine.com/marine/steelhead-marine/steelhead-marine-crane-manuals/

CRANE MANUALS

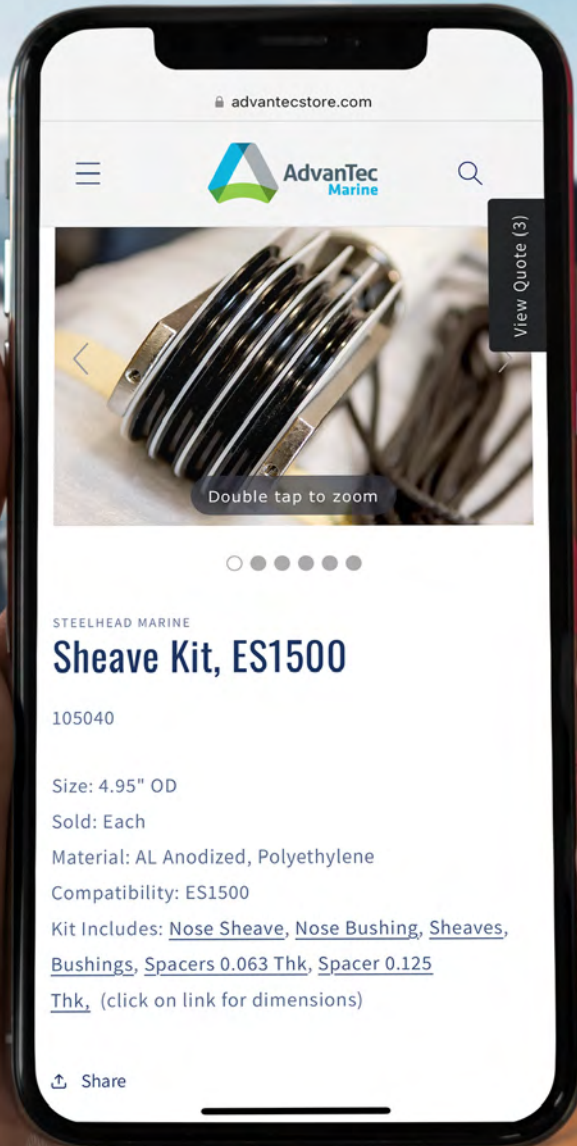
Downloadable maintenance information for all crane models

IN NEED OF STEELHEAD MARINE PARTS?

The AdvanTec Store is your go-to place for top-quality parts and quick quotes. Come see what's new! We're constantly expanding our product range and offer worldwide delivery.



SCAN TO VISIT THE ADVANTEC STORE



advantecstore.com



Double tap to zoom



STEELHEAD MARINE

Sheave Kit, ES1500

105040

Size: 4.95" OD

Sold: Each

Material: AL Anodized, Polyethylene

Compatibility: ES1500

Kit Includes: [Nose Sheave](#), [Nose Bushing](#), [Sheaves](#), [Bushings](#), [Spacers 0.063 Thk](#), [Spacer 0.125 Thk](#), (click on link for dimensions)

Share

WORLDWIDE SALES & SUPPORT

Chilliwack BC, Canada | sales@advantecmarine.com | +1-800-770-0455 | www.advantecmarine.com

Channel Coast Marine

Oxnard, CA USA
channelcoastmarine.com

Morton Marine Services

San Diego CA USA
MortonMarineServices.com

Maurer Marine

873 W. 17th St. Costa Mesa, CA
92627 Phone: 949-645-7673
Email: info@MaurerMarine.com

Deltaville Boatyard

Deltaville, VA USA
Deltavilleboatyard.com

NW Explorations

Bellingham WA USA
NWExplorations.com

Pacific Yacht Management

Seattle WA USA
pacificyachtmanagement.com

S3 Maritime

Seattle WA USA
s3maritime.com

Nordlund Boat Co.

Tacoma WA 98422
Nordlundboat.com

Bullhead Marine

Fort Pierce, FL USA
bullheadmarineinc.net

Escardo Marine

Saint Petersburg, FL USA
escardomarine.com

Magna Marine

Dania Beach FL USA
magnamarineservices.com

Navalex International, Inc.

Miami FL USA
navalex.com

Sterling Marine

Fort Lauderdale FL USA
sterlingmarine.com

Philbrooks Boatyard Ltd.

Sydney BC Canada
philbrooks.com

AW Yacht Services

awyachtservice@shaw.ca

Tri-Shore Yacht Services Ltd.

Port Moody BC Canada
trishoreyachts.com

West Coast Yacht Systems

Sidney, BC Canada
westcoastyachtsystems.com

Lankhorst / Taselaar

Lelystad, Netherlands
lankhorst-taselaar.nl

Sailtec GmbH

Hasselbinnen, Schenefeld
Germany
sailtec.de

Geetech

Le Panorama, Grimaldi, Monaco
geetech.mc

Halyard (M&I Limited)

Ferndown, Wimborne UK
halyard.eu.com

Motocraft S.A

Alimos, Greece
motocraft.gr

BTS MARIN

Tuzla, Istanbul Turkey
btsmarin.com.tr

Marine Cranes Australia Pty Ltd.

marinecranesaustralia.com.au

Lusty & Blundell Ltd.

Auckland New Zealand
lusty-blundell.co.nz

So-Pac Marine

North Shore New Zealand
sopac.co.nz

Asia Marine

Kaohsiung City Taiwan
asiamarine.com.tw



SCAN FOR MORE
SALES & SERVICES
INFORMATION

WORLDWIDE SERVICE & SUPPORT

AT ADVANTEC MARINE, WE SUPPORT WHAT WE SELL!

support@advantecmarine.com | +1-800-770-0455

We're more than a manufacturer of innovative marine products. We offer a range of technical support services for our products post-purchase. See below for some of our service offerings.

MAINTENANCE & REPAIRS:

- Davits/Cranes
- Doors - Automatic & Manual Doors
- Windows & Glass
- Hatches
- Onsite Diagnostics
- Machine Shop Services

INSPECTIONS & CONSULTING:

- OEM Inspections
- Installation Support & Oversight
- Weather & Watertight Testing
- Product Commissioning & Testing
- *Extended Warranty Qualification
- 24/7 Remote Technical Support

SCAN TO CONTACT
OUR SALES &
SUPPORT TEAM



ORDER FORM

First Name:

Company:

Email:

Last Name:

Country:

Phone Number:

If the model of the desired crane is known, please indicate the model below and complete the options:

Crane Model Selection

- | | | |
|------------------------------|--|-------------------------------|
| <input type="radio"/> WD600 | <input type="radio"/> ES1500 | <input type="radio"/> CT3500 |
| <input type="radio"/> WD800 | <input type="radio"/> E1750 | <input type="radio"/> CT4000 |
| <input type="radio"/> WD1000 | <input type="radio"/> ES1750 | <input type="radio"/> CT4500 |
| <input type="radio"/> E1000 | <input type="radio"/> ES2200 | <input type="radio"/> CT5000 |
| <input type="radio"/> ES1000 | <input type="radio"/> ES2500 | <input type="radio"/> CT6000 |
| <input type="radio"/> E1500 | <input type="radio"/> CT2000/2500/3000 | <input type="radio"/> CT10000 |

Questions to Determine Crane Model for Estimate:

Safe Working Load:

Maximum capacity required to lift (in lbs):

Reach:

Maximum reach needed (in feet):

Controllers

Select one:

Controller Option	Select
Wired	
Wireless	
Both	

Mounting

Select one:

Mounting Option	Select
Standpipe	
Round Base	
Square Base	
HPU Base (pump in base)	
Unlisted / Custom mount (please describe)	

Color:

Standard colors available

Color Option	Select
Snow White	
Stark White	
Other (please specify):	

Hose Length:

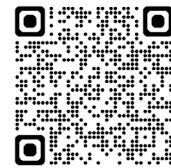
Distance from HPU to crane

Hose Length Option	Select
5 ft	
8 ft	
16 ft	
22 ft	
Other (please specify):	

Power Required (if AC selected please indicate single or three phase)

Select one:

Power Option	Select
12v DC	
24v DC	
110v AC	
220v AC	



SCAN TO CONTACT US

NOTES

ADVANTEC MARINE HEADQUARTERS





STEELHEAD MARINE MANUFACTURING

ADVANTEC ADVANTAGE



3 YEAR
HASSLE-FREE
WARRANTY

WE ARE PASSIONATE ABOUT DELIVERING

RELIABLE **SOLUTIONS**
SUPERIOR **QUALITY**
WORLD-CLASS **SUPPORT**



Proudly part of the **AdvanTec** family of brands



AdvanTec Manufacturing Canada
43676 Progress Way, Chilliwack,
BC, V2R 0C3, Canada

Phone: 1.800.770.0455
Email: info@advantecmarine.com
www.advantecmarine.com

AdvanTec Manufacturing USA
28336 Hunter Creek Rd., Gold
Beach, OR, 97444, USA