

Maximum 345 kW (463 hp) @2800 RPM (PLEASURE CRAFT)

STANDARD EQUIPMENT

MG-5061SC

Vertical offset, cast iron housing
 Mechanical control valve
 Oil strainer

MG-5061A

Vertical offset, cast iron housing
 7° down angle on output shaft
 Mechanical control valve
 Oil strainer

MG-5061RV

Remote V-drive, cast iron housing
 7° down angle on output shaft
 Input flange
 Mechanical control valve
 Oil strainer



INPUT RATINGS - KILOWATS (KW) (HORSEPOWER (HP))*

For service classification definitions and important notes refer to www.twindisc.com, the Twin Disc Marine Product Guide or contact Twin Disc directly.

MG-5061SC

Reduction Ratios :1	Pleasure Craft @ 2800 RPM	Light Duty @ 2800 RPM	Intermediate Duty @ 2500 RPM	Medium Duty @ 2100 RPM	Continuous Duty @ 2100 RPM
1.00, 1.15, 1.48 1.77, 2.00	345 kW (463 hp)	323 kW (433 hp)	239 kW (320 hp)	157 kW (211 hp)	142 kW (190 hp)
2.43	321 kW (430 hp)	300 kW (402 hp)			
3.00	298 kW (400 hp)	279 kW (374 hp)		147 kW (197 hp)	133 kW (178 hp)

MG-5061A & MG-5061RV

Reduction Ratios :1	Pleasure Craft @ 2800 RPM	Light Duty @ 2800 RPM	Intermediate Duty @ 2500 RPM	Medium Duty @ 2100 RPM	Continuous Duty @ 2100 RPM
1.13, 1.28 1.54, 1.75	345 kW (463 hp)	313 kW (420 hp)	239 kW (320 hp)	157 kW (211 hp)	142 kW (190 hp)
2.00		300 kW (402 hp)			
2.47	321 kW (430 hp)				

* Ratings shown for use with standard right-hand rotation engines.
 The maximum allowable rated engine speed is 3300 rpm (5500 rpm in high speed configuration).



Specifications subject to change without prior notice in the interest of continual product improvement.
 Contact your local Twin Disc representative for engineering specifications, Survey Society Approvals and Classifications.

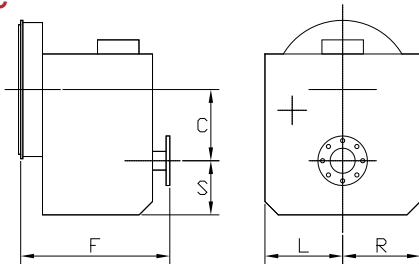
Scan QR code to see Twin Disc's entire Marine product line.



OPTIONS

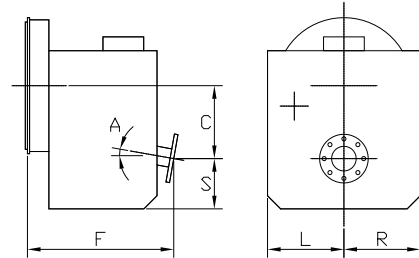
	MG-5061SC	MG-5061A	MG-5061RV
SAE J617 no. 2 to SAE J617 no. 1 housing adaptor	X	X	
SAE J617 housing no. 2	X	X	
SAE J617 housing no. 3	X	X	
SAE J617 housing no. 4	X	X	
Borg Warner housing	X	X	
Flexible coupling for 14" flywheel (SAE J620 size 355)	X	X	
Flexible coupling for 11½" flywheel (SAE J620 size 290)	X	X	
Flexible coupling for 10" flywheel (SAE J620 size 255)	X	X	
Input flange for freestanding installation	X	X	standard
High speed configuration (3300-5500 rpm)	X	X	X
Electric control valve (12VDC or 24 VDC)	X	X	X
Mechanical trolling valve	X	X	X
Oil cooler	X	X	X
Companion flange/ bolts set	X	X	X
Monitoring devices to customer's specification	X	X	X
Mounting brackets	X	X	X
Live PTO:			
SAE J744 size 82-2, 16-4 (SAE "A", 2-bolt) - max. 35 Nm	X	X	
SAE J744 size 101-2/4, 22-4 (SAE "B", 2/4-bolt)			
- max. 197 Nm	X	X	
Dry weight incl. SAE #3 housing and SAE 290 flexible coupling	103 kg	99 kg	89 kg

MG-5061SC



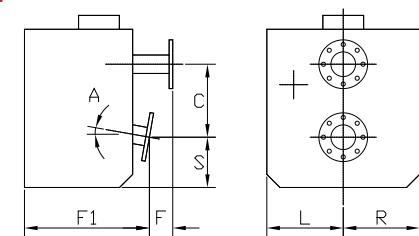
C	144 mm (5.66")
S	123 mm (4.84")
F	335 mm (13.18")
L	213 mm (8.40")
R	156 mm (6.15")

MG-5061A



C	146 mm (5.75")
S	107 mm (4.21")
F	318 mm (12.53")
L	213 mm (8.40")
R	156 mm (6.16")
A	7°

MG-5061RV



C	146 mm (5.75")
S	107 mm (4.21")
F	71 mm (2.79")
F1	267 mm (10.53")
L	213 mm (8.40")
R	156 mm (6.16")
A	7°

Twin Disc, Incorporated reminds users of these products that their safe operation depends on use in compliance with engineering information provided in our catalog. Users are also reminded that safe operation depends on proper installation, operation and routine maintenance and inspection under prevailing conditions. It is the responsibility of users (and not Twin Disc, Incorporated) to provide and install guards or safety devices which may be required by recognized safety standards or by the Occupational Safety and Health Act of 1970 and its subsequent provisions.

United States of America • Australia • Belgium • Canada • China • India • Italy • Singapore • Switzerland

For nearly a century, we've been making boats perform better and more reliably. From system-design consultation to application development to in-service support, Twin Disc provides fully integrated propulsion solutions that will optimize your craft's performance, reliability and safety over the years. Bring Twin Disc aboard early in the development process, and you'll enjoy a lifetime of enhanced operating value.

TRANSMISSIONS • ELECTRONIC CONTROLS • EXPRESS JOYSTICK SYSTEM® • SAILDRIVES • EXPRESS POSITIONING® • ARNESON SURFACE DRIVES • MARINE CONTROL DRIVES • ROLLA PROPELLERS • BOW & STERN THRUSTERS • STEERING SYSTEMS • RUDDERS • TRIM TABS



Twin Disc, Incorporated
Racine, Wisconsin 53403 USA
Phone +1-262-638-4000
Fax +1-262-638-4482
www.twindisc.com

TD-Bulletin-MG-5061_Series
© 2016, Twin Disc, Incorporated
Printed in the USA - 1/2016