

POWER & CONTROL

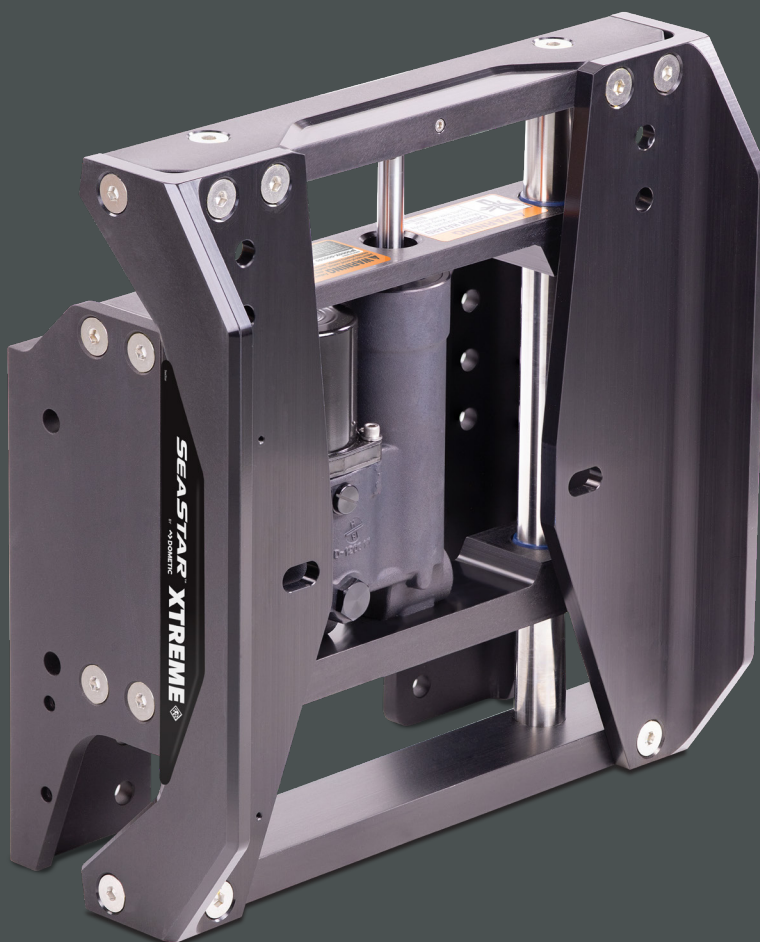
SEASTAR XTREME JACKPLATES

The Dometic SeaStar Xtreme Jackplate is rated for 400 horsepower gasoline engines and is designed to maximize engine tilt when used with Dometic SeaStar steering cylinders.

RIGID
ENGINE SUPPORT

RAPID RESPONSE
8.5 SECONDS

SLEEK, BOLD
STYLING



Mobile living made easy.

 **DOMETIC** **OUTDOOR**

ONE OF THE MOST DURABLE ENGINE JACKPLATES AVAILABLE.



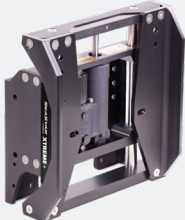
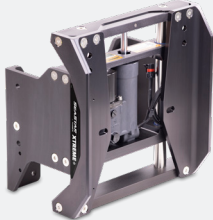
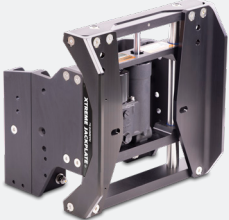
The Dometic SeaStar Xtreme Jackplate is one of the sleekest and most durable engine Jackplates available. This essential performance accessory allows for higher speed, gains in fuel economy and the ability to run in shallow water.

Available in 4, 6, 8, 10 and 12 inch setbacks. Jackplates are equipped with an integrated hydraulic actuator that lifts engines 5.6" in 8.5s. The Dometic SeaStar Xtreme Jackplate is designed to maximize engine tilt when used with Dometic SeaStar steering cylinders.

Features

- Xtreme jackplate is using high strength materials and is easily capable of handling up 400 horsepower engines
- Rapid hydraulic response in 8.5 seconds
- Complete rigid engine support at full thrust
- Easily moves engine up or down at full thrust
- Smooth operation with composite bushings
- Easy wrench access to engine bolts from the side
- Compatible with all shallow water anchors
- High output integrated actuator to lift and lower engines in all conditions
- Environmentally sealed non-contact SmartStick position sensor kit available for precise height information
- Designed to maximize engine tilt with Dometic SeaStar steering cylinders
- High visibility lift scale for quick glance operation
- Integrated circuit breaker gives electrical protection right at the battery post
- All hydraulic Jackplates come with basic rocker switch DK4020

XTREME JACKPLATE OPTIONS

| 4" Setback | 6" Setback | 8" Setback | 10" Setback | 12" Setback |
|---|---|---|--|---|
|  |  |  |  |  |
| JP5040X* | JP5060X | JP5080X | JP5100X | JP5120X |

Note: * Accessory adapter DK4600 is required for installation of anchoring systems on JP5040X.

SLEEK, BOLD STYLING THAT REDEFINES THE LOOK FOR JACKPLATES.

| ORDER INFORMATION | |
|---|-----------|
| ACCESSORIES | PART NO. |
| ProTrim Switch Single Function | PT1000-2P |
| ProTrim Switch Dual Function | PT2000-2P |
| SmartStick and Gauge Kit | DK4220 |
| Gauge and Harness Kit | DK4320 |
| Accessory Adapter* | DK4600 |
| Kit, Anode | DK4850 |
| Hole Shot Plate Kit, 6" | HSP5060 |
| Hole Shot Plate Kit, 8" | HSP5080 |
| Hole Shot Plate Kit, 10" | HSP5100 |
| Hole Shot Plate Kit, 12" | HSP5120 |
| 4x SS bolts, brass nylock nuts and SS washers. 1/2"-13 UNC X 2-1/2" L | DK6125 |
| 4x SS bolts, brass nylock nuts and SS washers. 1/2"-13 UNC X 3-1/2" L | DK6135 |
| 4x SS bolts, brass nylock nuts and SS washers. 1/2"-13 UNC X 4-1/2" L | DK6145 |
| 4x SS bolts, brass nylock nuts and SS washers. 1/2"-13 UNC X 6-1/2" L | DK6165 |
| Dometic SeaStar Stabilizer Clips, (pack of 2) | HYCL-001 |
| SPARE PARTS | PART NO. |
| Smartstick Replacement Kit | DK4250 |
| Jackplate Wire Harness | DK4420 |
| Actuator Kit, 3/8" Mount Bolt, 5/16" socket | DK4710 |
| Actuator Kit, 7/16" Mount Bolt, 3/8" socket | DK4720 |
| Basic Rocker Switch* | DK4020 |

Notes: * Accessory adapter DK4600 is required for installation of anchoring systems on JP5040X.

** Included with Jackplate harness.

AVAILABLE IN 4, 6, 8, 10 AND 12 INCH SETBACKS.

Technical Information

