

POWER & CONTROL

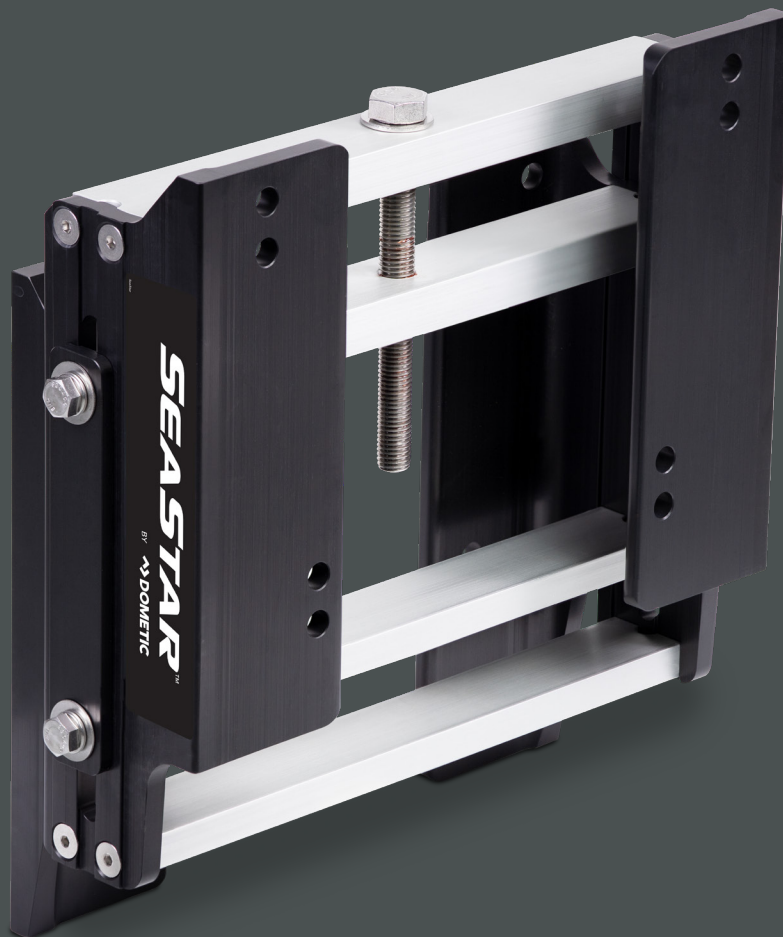
SEASTAR MANUAL JACKPLATES

The JP1000 Series Jackplate comes in 4", 6", 8", and 10" setbacks to help you find the best match for your boat and optimize performance.

STAINLESS STEEL LEAD SCREW
CORROSION RESISTANT

3 INCHES
AVAILABLE LIFT

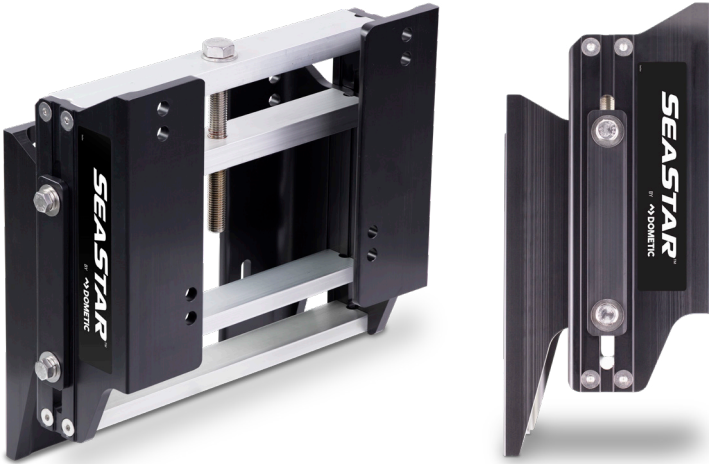
INTERLOCKING SLIDE GUIDES
SMOOTH BIND-FREE TRAVEL



Mobile living made easy.

 **DOMETIC** **OUTDOOR**

CAPABLE OF HANDLING THE MOST DEMANDING OUTBOARD ENGINES.



Features

- Rated for max 200HP 4-stroke gasoline engines
- The interlocking slide guides offer enhanced strength while providing smooth, bind-free travel.
- The lead screw assembly sets the plate height and the side locks are used to hold the position.
- The stainless steel lead screw is resistant to corrosion and pre-greased for smooth operation.

MANUAL JACKPLATE OPTIONS

4" Setback with Side Locks	6" Setback with Side Locks	8" Setback with Side Locks	10" Setback with Side Locks
			
JP1040SS	JP1060SS	JP1080SS	JP1100SS

Technical Data

