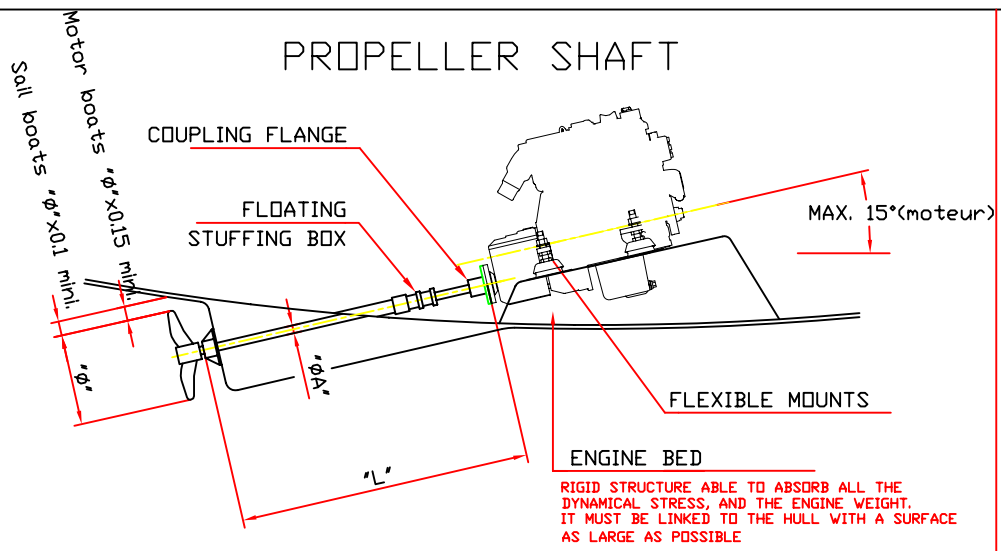


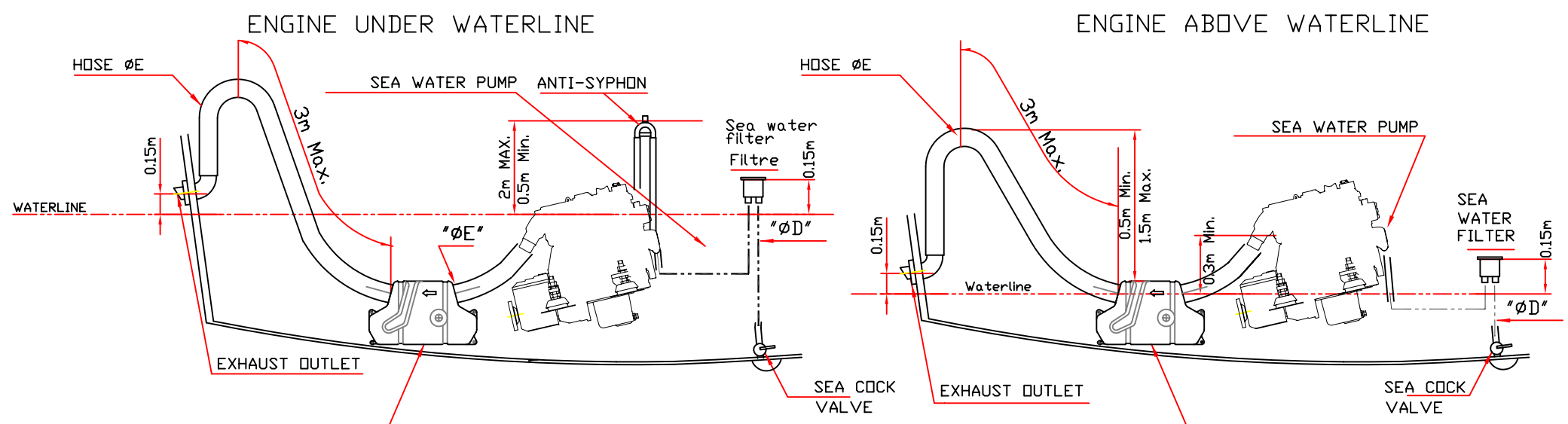
PROPELLER SHAFT



| ENGINE | REDUCTION RATIO | "ØA" (316L) (mm) | "Ø" (inches) | "L" (m) | ENGINE SPEED | | |
|--------|-----------------|------------------|--------------|--------------|--------------|------|------------|
| | | | | | IDLING | MAXI | (w/o load) |
| N2.10 | 2 2.6 | 22 22 | 12 13 | 1.20 1.40 | 1050 | 3000 | 3300 |

* FOR PROPELLER CALCULATION, PLEASE FILL IN THE "PROPELLER STUDY" FORM
** MAXIMUM VALUE ACCEPTED

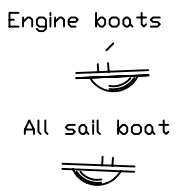
SEA WATER PICK-UP AND EXHAUST LINES



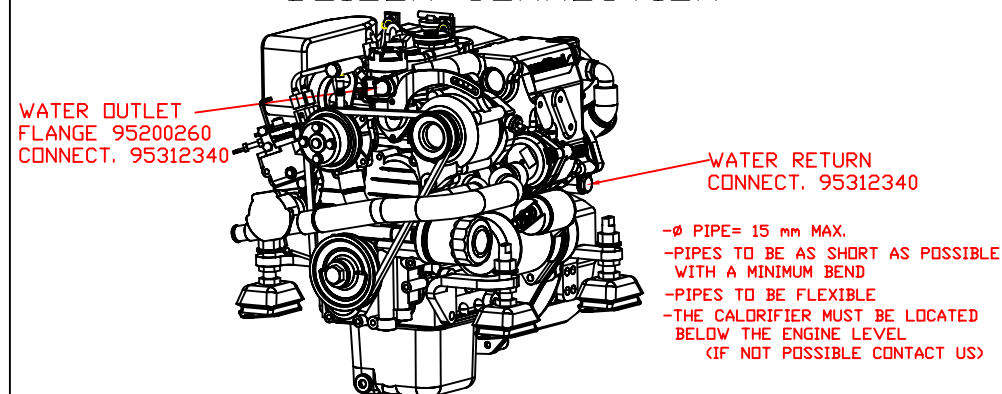
| ENGINE | "ØD" (mm) | "ØE" (mm) | MAX BACK-PRESSURE (bar/PSI) | "V" mini. (litre) |
|--------|-----------|-----------|-----------------------------|-------------------|
| N2.10 | 20 | 45/50 | 0.08/0.005 | 5 |

-ANTI SYPHON VALVE
IT MUST BE FITTED AFTER THE RAW WATER PUMP BEFORE HEATEXCHANGER INLET

-WATER LOCK
IT MUST BE ALWAYS LOWER AND NEAR THE ENGINE

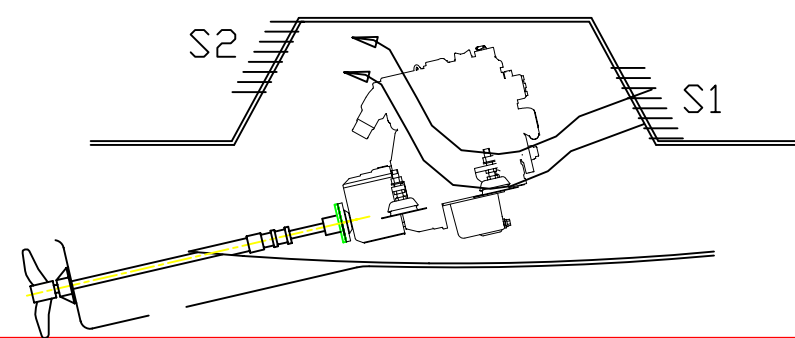


BOILER CONNECTION

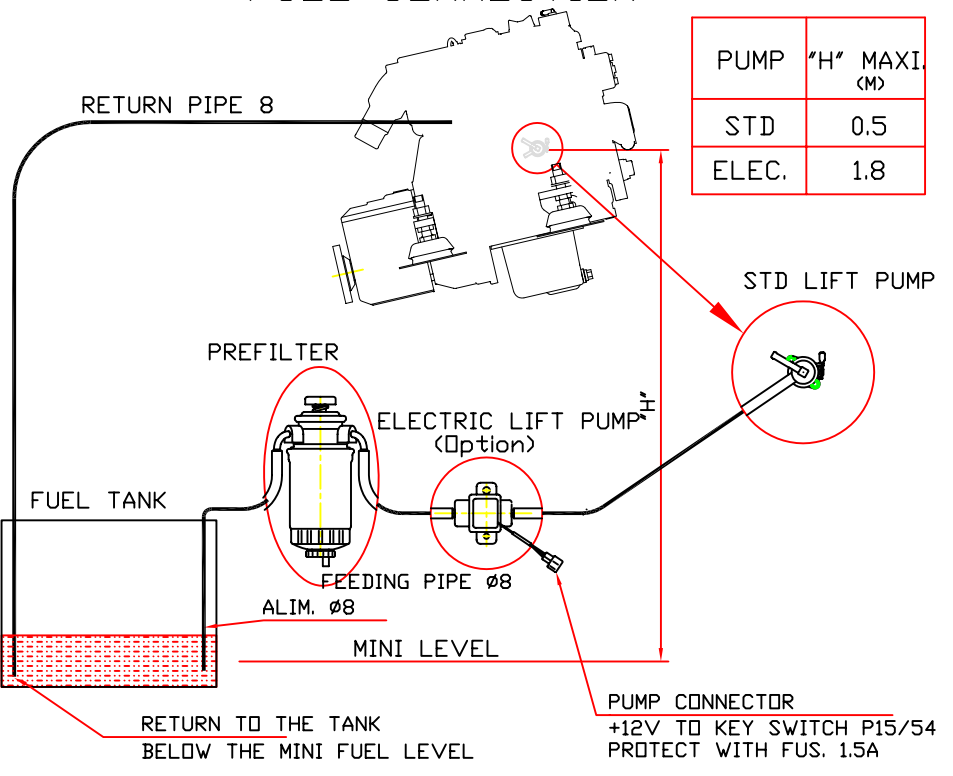


AIR REQUIREMENT

| ENGINE | ENGINE AIR CONSUM (m3/min) | INLET "S1" (cm2) | OUTLET "S2" (cm2) |
|--------|----------------------------|------------------|-------------------|
| N2.10 | 0.6 | 85 | 25 |

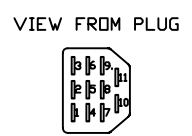


FUEL CONNECTION

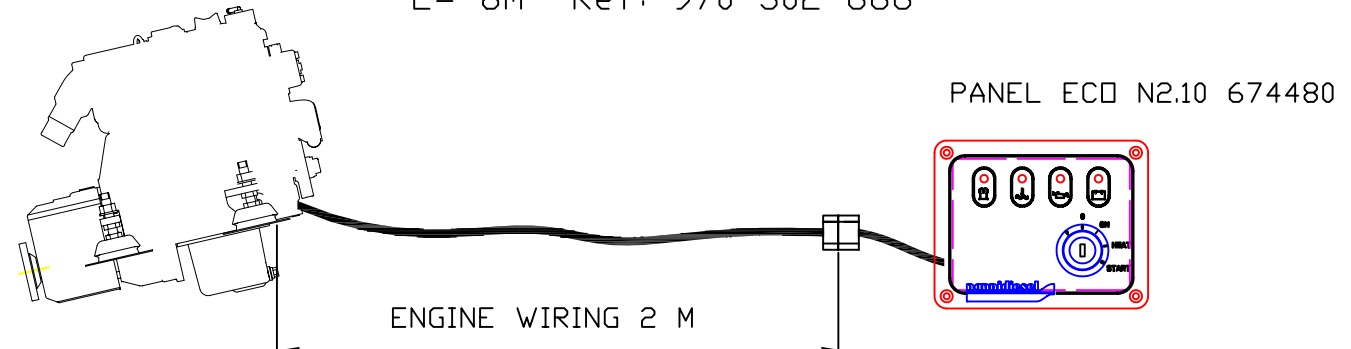


ELECTRICAL WIRINGS

- CONNECTOR
- +BATTERY 12V
 - BATTERY 12V
 - STARTER
 - PREHEATING
 -
 -
 - D+ LIGHT
 - OIL SWITCH
 - WATER SENDER
 - PLUS CONTACT
 -



Additional wiring
L= 2m Ref: 970 304 162
L= 4m Ref: 970 302 665
L= 8m Ref: 970 302 666



ECH. DESSINE LE 11-12-06 PAR PL VERIF.

INSTALLATION DETAILS
N2.10

IND A le 13/02/07

CE DESSIN EST LA PROPRIETE DE NANNI INDUSTRIES ET NE PEUT ETRE REPRODUIT OU COMMUNIQUE SANS SON AUTORISATION

nannidiesel
NANNI INDUSTRIES Z.I. - Av. Marlotte - BP 107
33260 LA TESTE - FRANCE
11 12 111 798