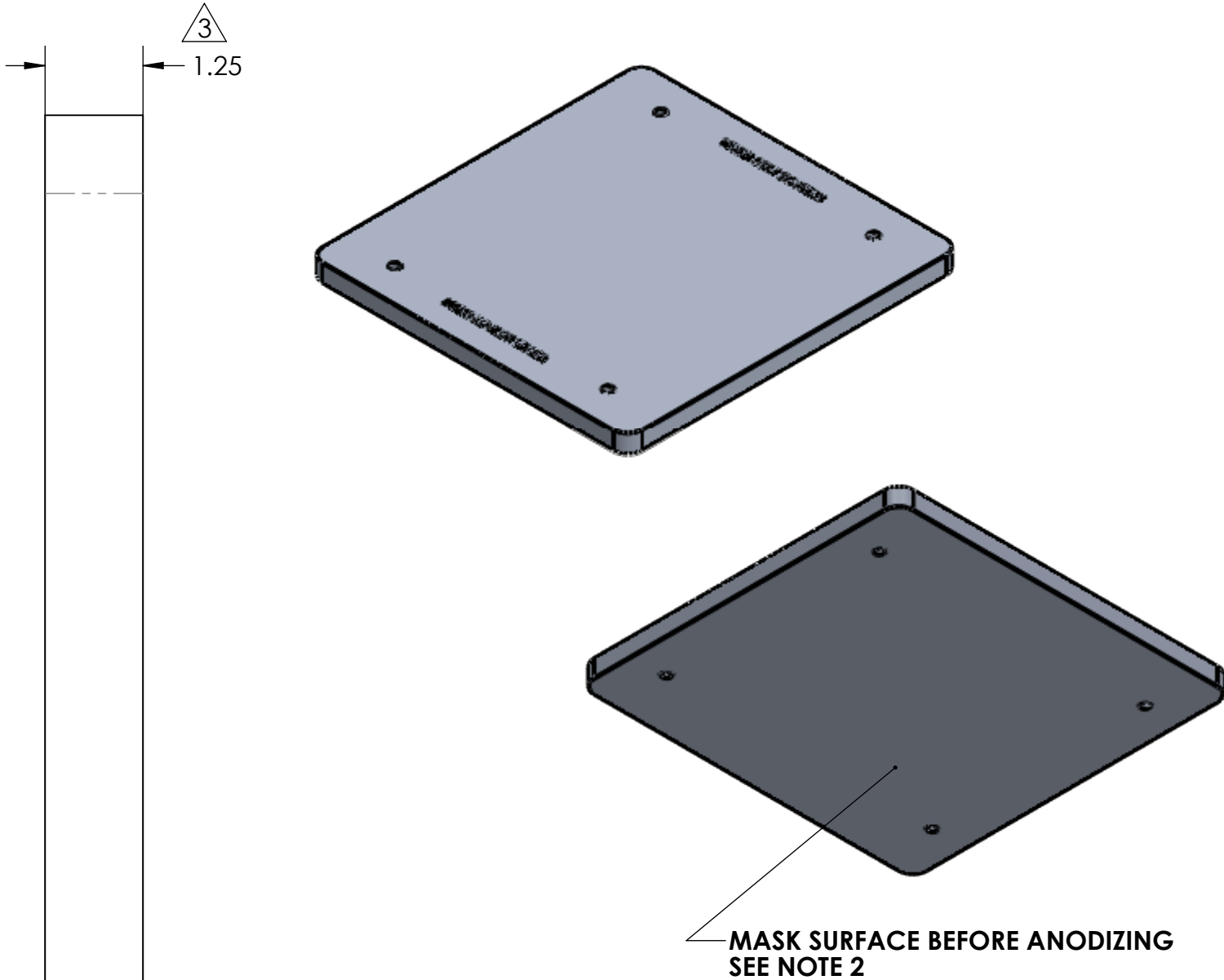
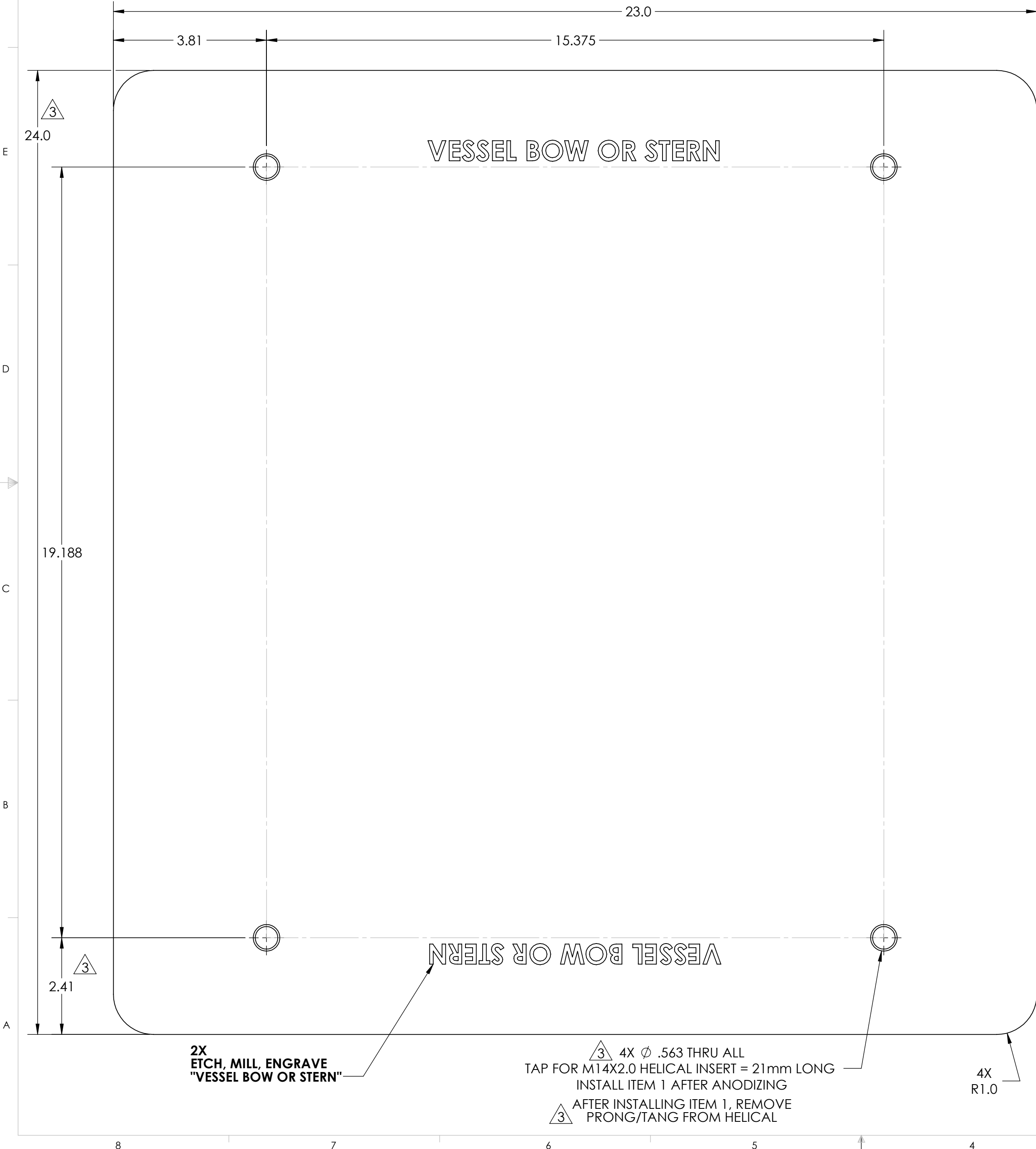


NOTES: 1) UNLESS OTHERWISE SPECIFIED, ALL MACHINED FEATURES ARE TO COMPLY AS FOLLOWS;  
2 PLACE DECIMAL DIMENSIONS = +/- .010", 3 PLACE DECIMAL DIMENSIONS = +/- .005"  
FRACTIONAL DIMENSIONS = +/- 1/16", ANGULAR DIMENSIONS X° = +/- 1°, X.X° = +/- .5°  
ALL DIAMETER RUNOUT TO DATUM FEATURES = .005" MAX.  
ALL FACES PARALLEL AND PERPENDICULAR TO DATUM SURFACES = .005" MAX.  
ALL CORNER FILLET RADII = .010"-.030"

63  
SURFACE FINISH TO BE MAX. ROUGHNESS  
BREAK ALL SHARP EDGES .020" MAX. PER EDGE.  
2) ANODIZE ALL SURFACES EXCEPT THE BOTTOM AS SHOWN; IN ACCORDANCE WITH MIL-A-8625  
-TYPE III, CLASS 2 BLACK

REV NO.	ECN NO.	ZONE	DESCRIPTION	DATE	APPRVD.
3			PLATE THICKNESS CHANGED FROM 1.000in TO 1.250in; LENGTH 22.0in TO 24.0in; 4X Ø .571 THRU ALL CHANGED TO Ø .563; AND ADDED NOTE TO REMOVE PRONG/TANG	4/17/2020	WMG



1	60418	THREADED INSERT, HELICAL, M14-2.0 X 21MM LG, SS	MCMasterCARR	91732A671	1
ITEM NO.	PART NUMBER	DESCRIPTION	VENDOR	VENDOR PN	QTY.
WEIGHT - LBS : 67.03		<b>PROPRIETARY AND CONFIDENTIAL</b> THE INFORMATION CONTAINED IN THIS DRAWING IS THE SOLE PROPERTY OF SEAKEEPER INCORPORATED. ANY REPRODUCTION IN PART OR AS A WHOLE WITHOUT THE WRITTEN PERMISSION OF SEAKEEPER IS PROHIBITED.		NAME: SK1 INSTALLATION PLATE	
MATERIAL: 6061-T6		DRAWN: WHK ENG APPR: DATE: 09OCT2019 PROD APPR: DATE:	DWG NUMBER 90564		REV. NO. SHEET NO. 3 1 OF 1